

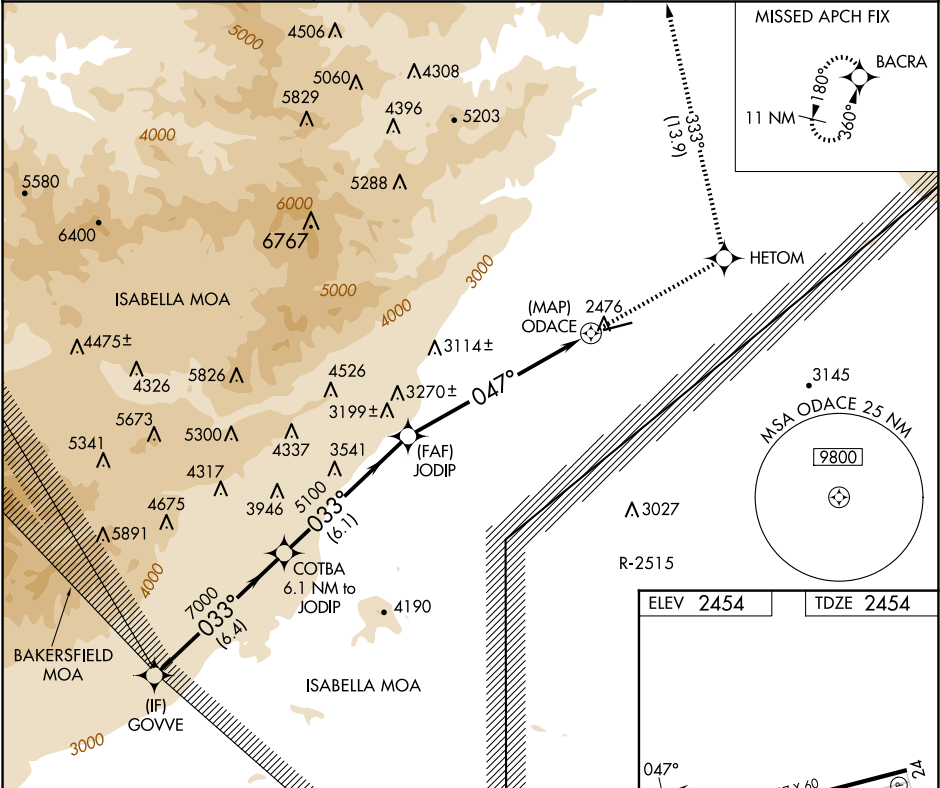
APP CRS 047°	Rwy Idg TDZE Apt Elev	6027 2454 2454
------------------------	-----------------------------	---

RNAV (GPS) RWY 6
CALIFORNIA CITY MUNI (L71)

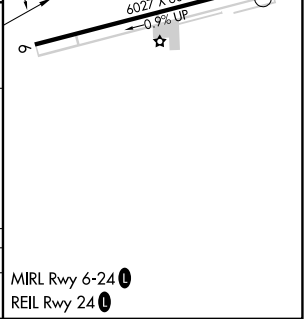
RNP APCH.
RADAR required.
<div><div>▼</div><div>▲ NA</div></div> If local altimeter setting not received, use Edwards AFB altimeter setting and increase all MDAs 60 feet; if neither received, procedure not authorized.

MISSED APPROACH: Climb to 9000 direct HETOM and via 333° track to BACRA and hold, continue climb-in-hold to 9000.

AWOS-1 120.875	JOSHUA APP CON 133.65 348.7	UNICOM 122.7 (CTAF) 0
--------------------------	---------------------------------------	---------------------------------



Procedure Turn NA	GOVVE	COTBA 6.1 NM to JODIP	9000	HETOM	333° tr	BACRA
	9000	7000	5100	ODACE		
CATEGORY	A	B	C	D		
LNAV MDA	3660-1¼ 1206 (1300-1¼)	3660-1½ 1206 (1300-1½)	3660-3 1206 (1300-3)	NA		



SW-3, 07 AUG 2025 to 04 SEP 2025

SW-3, 07 AUG 2025 to 04 SEP 2025