

APP CRS  
227°

Rwy Idg  
TDZE  
Apt Elev

6027  
2429  
2454

RNAV (GPS) RWY 24

CALIFORNIA CITY MUNI (L71)

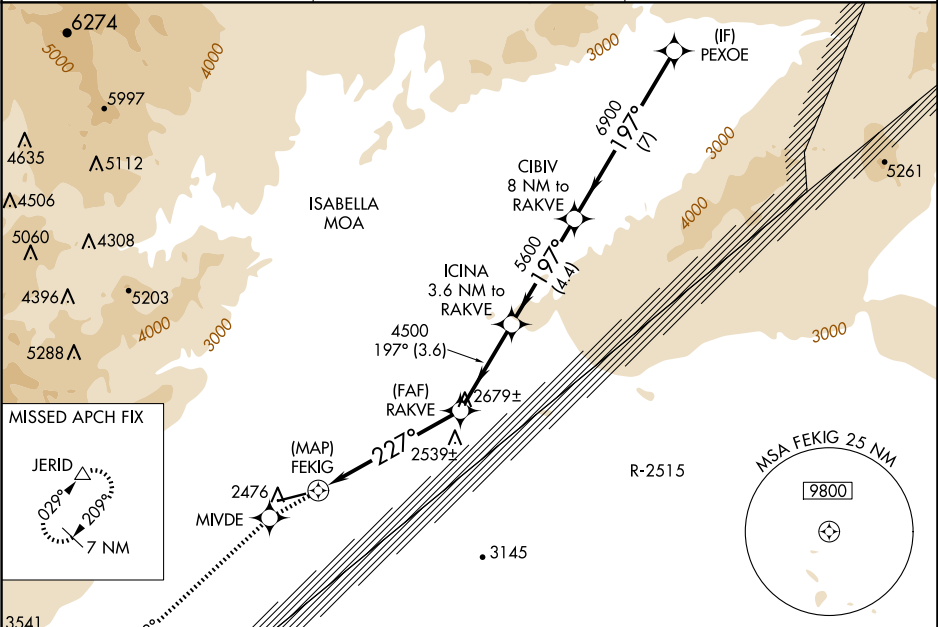
RNP APCH.

NA

If local altimeter setting not received, use Edwards AFB altimeter setting and increase all MDAs 60 feet; if neither received, procedure not authorized.

MISSED APPROACH: Climb to 9000 direct MIVDE and via 213° track to JERID and hold, continue climb-in-hold to 9000.

AWOS-1 120.875	JOSHUA APP CON 133.65 348.7	UNICOM 122.7 (CTAF)
-------------------	--------------------------------	------------------------



ELEV 2454

TDZE 2429

9000

MIVDE

213° tr

JERID

VGSI and descent angles not coincident (VGSI Angle 3.00/TCH 40).

PEXOE

RAKVE

ICINA

CIBIV

9000

Procedure Turn NA

FEKIG

3.05° TCH 50

4500

5600

6900

197°

227°

0.5

5.8 NM

3.6 NM

4.4 NM

7 NM

CATEGORY	A	B	C	D
LNAV MDA	2820-1	391 (400-1)		NA
CIRCLING	2960-1	506 (600-1)	3080-1¾ 626 (700-1¾)	NA

MRL Rwy 6-24  
REL Rwy 24