

BEAVER, UTAH

AL-9437 (FAA)

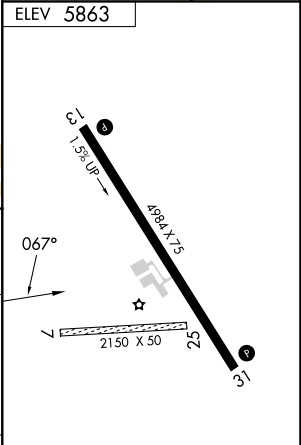
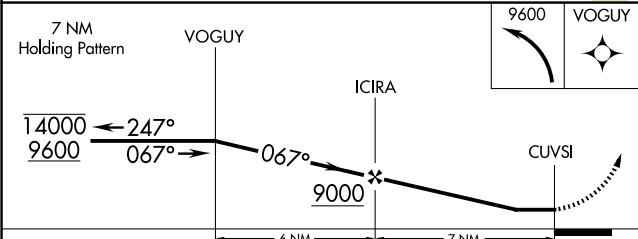
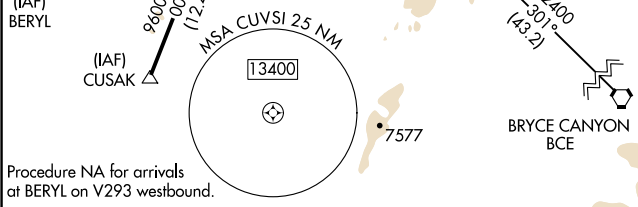
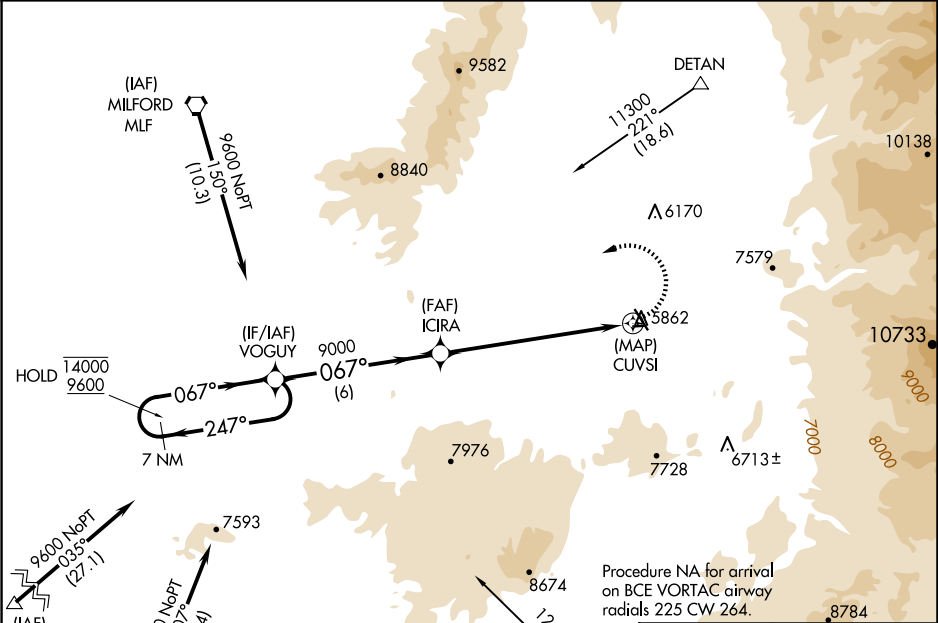
25163

APP CRS	Rwy Ldg TDZE	N/A
067°	Apt Elev	5863

RNAV (GPS)-A
BEAVER MUNI (U52)

RNP APCH.	MISSED APPROACH: Climbing left turn to 9600 direct VOGUY and hold.
<div><div></div><div></div></div> <div>Circling Rwy 7, 25, 31 NA at night. Circling NA for Cat C southwest of Rwy 13-31.</div>	

AWOS-3PT 119.925	SALT LAKE CITY CENTER 125.575 379.275	CTAF 122.9
---------------------	--	---------------



CATEGORY	A	B	C	D
CIRCLING	7080-1¼ 1217 (1300-1¼)	7080-1½ 1217 (1300-1½)	7580-3 1717 (1800-3)	NA

MIRL Rwy 13-31
REIL Rwy 13 and 31

BEAVER, UTAH

Orig-B 25MAR21

38°14'N-112°41'W

BEAVER MUNI (U52)
RNAV (GPS)-A

SW-4, 07 AUG 2025 to 04 SEP 2025

SW-4, 07 AUG 2025 to 04 SEP 2025