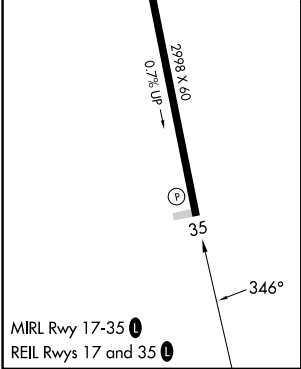
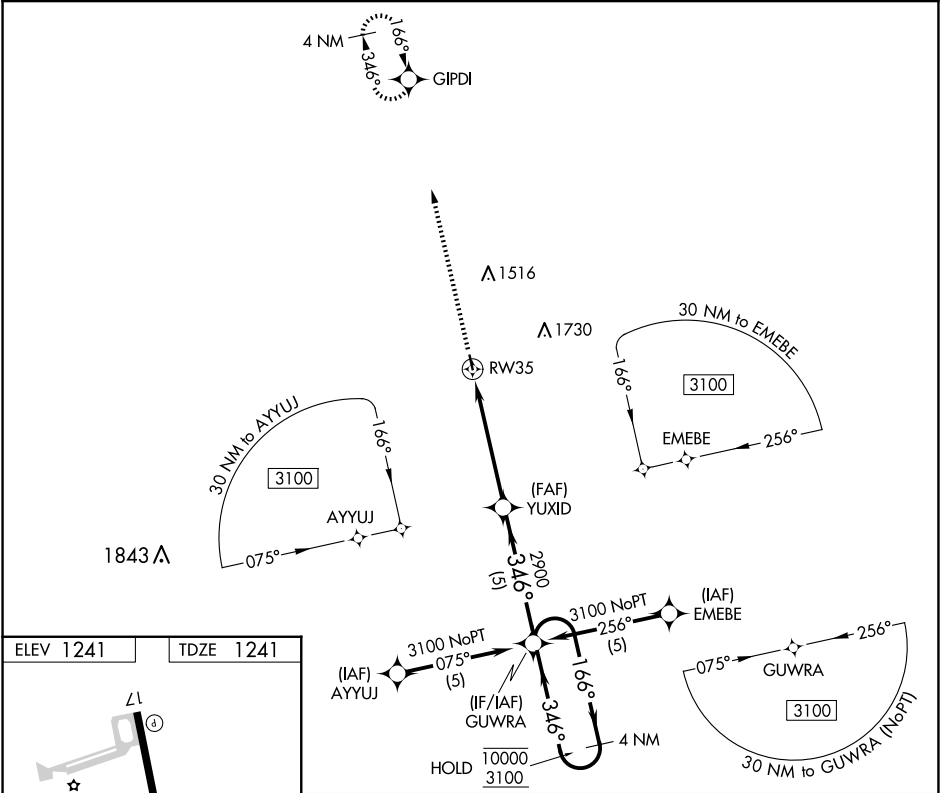


APP CRS	Rwy Idg	2998
346°	TDZE	1241
	Apt Elev	1241

RNAV (GPS) RWY 35
SALEM MEML (K33)

RNP APCH - GPS.	MISSED APPROACH: Climb to 3000 direct GIPDI and hold.
<div><div>▼</div><div>NA</div></div> Rwy 35 helicopter visibility reduction below ¾ SM NA. When VIH altimeter setting not received, procedure NA. Use VIH altimeter setting.	

VIH ASOS 119.025	KANSAS CITY CENTER 128.35 284.675	CTAF 122.9 0
---------------------	--------------------------------------	-----------------



3000 ↑	GIPDI ✦	VGS and descent angles not coincident (VGS Angle 3.00/TCH 45).			
		YUXID	GUVRA	4 NM Holding Pattern	
RW35 ↻		3.00° TCH 40	346°	166° → ← 346°	10000 3100
		2900			
		5.1 NM	5 NM		
CATEGORY	A	B	C	D	
LNAV MDA	1960-1	719 (800-1)	NA		
CIRCLING	1960-1	719 (800-1)	NA		