

MILBANK, SOUTH DAKOTA

AL-9435 (FAA)

24221

APP CRS	Rwy Idg	<b>4000</b>
<b>312°</b>	TDZE	<b>1117</b>
	Apt Elev	<b>1118</b>

RNAV (GPS) RWY 31  
MILBANK MUNI (1D1)

RNP APCH - GPS.

**T** Rwy 31 helicopter visibility reduction below  $\frac{3}{4}$  SM NA. Circling Rwy 7, 25 NA. When local altimeter setting not received, use Ortonville altimeter setting and increase all MDAs 20 feet. VDP NA when using Ortonville Muni/Martinson Fld altimeter setting.

**MISSED APPROACH:** Climb to 3400 direct MORRE and hold.

AWOS-3P  
118.9

MINNEAPOLIS CENTER  
128.5 306.2

AUNICOM  
122.8 (CTAF) **L**

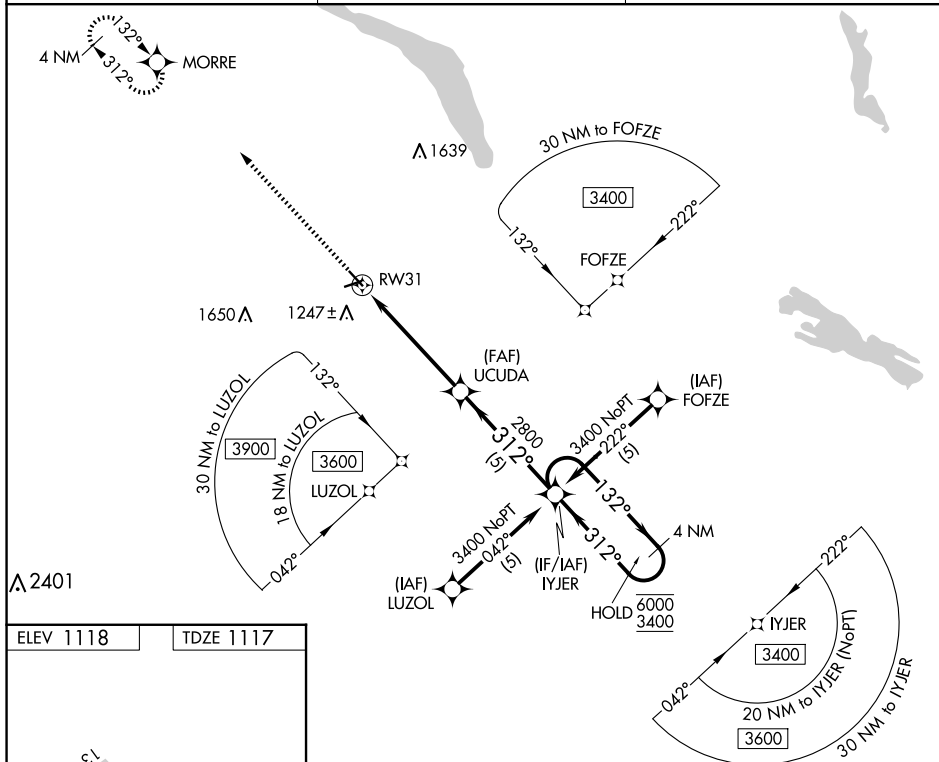


Diagram illustrating a runway intersection. Runway 13-31 is 4000 x 60 feet wide. Runway 3586 is 155 feet wide. The intersection angle is 312°. A 25-foot wide area is marked near the intersection.

MILBANK, SOUTH DAKOTA  
Orig-C 08AUG24

45°14'N-96°34'W

MILBANK MUNI (1D1)  
RNAV (GPS) RWY 31

NC-1, 07 AUG 2025 to 04 SEP 2025