



WAAS CH 50515 W32A	APP CRS 313°	Rwy Idg 3600 TDZE 1608 Apt Elev 1608
--	------------------------	---

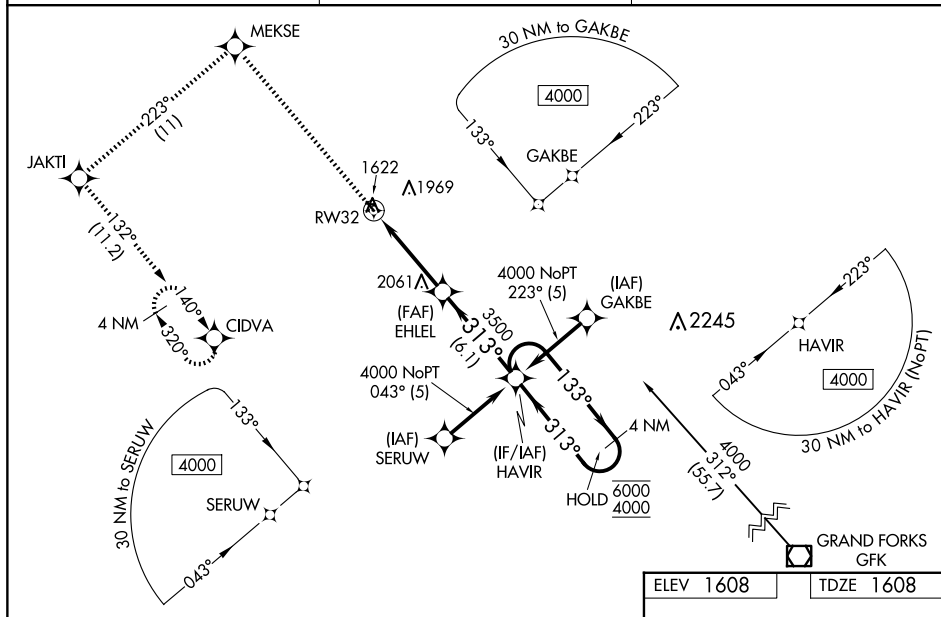
RNAV (GPS) RWY 32
ROBERTSON FLD (D55)

RNP APCH - GPS.



 Circling NA to Rwy 8 and 26. Rwy 32 helicopter visibility reduction below $\frac{3}{4}$ SM NA. Baro-VNAV NA when using Devils Lake altimeter setting. For uncompensated Baro-VNAV systems, LNAV/VNAV NA below -18°C or above 54°C. When local altimeter setting not received, use Devils Lake altimeter setting and increase LPV DA to 1983 feet; increase LNAV/VNAV DA to 2284 feet and all visibilities $\frac{1}{4}$ SM. Increase all MDAs 140 feet and LNAV/visibility Cat A/C $\frac{1}{2}$ SM, and Circling visibility Cat A/C $\frac{1}{2}$ SM.

MISSED APPROACH: Climb to 4000 direct MEKSE and on 223° track to JAKTI and on 132° track to CIDVA and hold.

AWOS-3 118.225	MINNEAPOLIS CENTER 132.15 269.6	UNICOM 122.8 (CTAF) 0
--------------------------	---	---------------------------------



4000 ↑		MEKSE ✧		tr 223° ✧		JAKTI ✧		tr 132° ✧		CIDVA ✧			
VGSI and RNAV glidepath not coincident (VGSI Angle 3.00/TCH 27).										EHLEL			
										HAVIR		4 NM Holding Pattern	
										133° → 6000 ← 313° 4000			
										GP 3.00° TCH 40°			
CATEGORY		A		B		C		D					
LPV	DA	1858-1		250 (300-1)				NA					
LNAV/ VNAV	DA	2159-1½		551 (600-1½)				NA					
LNAV MDA		2360-1 752 (800-1)		2360-1¼ 752 (800-1¼)		2360-2 752 (800-2)		NA					
CIRCLING		2360-1 752 (800-1)		2360-1¼ 752 (800-1¼)		2360-2¼ 752 (800-2¼)		NA					

