

APP CRS  
133°

Rwy Idg  
3600

TDZE  
1606

Apt Elev  
1608

RNAV (GPS) RWY 14

ROBERTSON FLD (D55)

RNP APCH - GPS.

▼

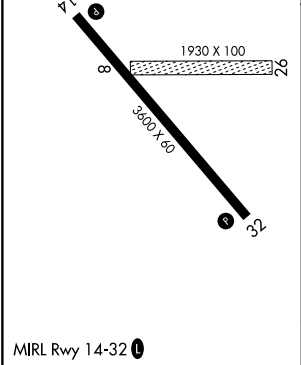
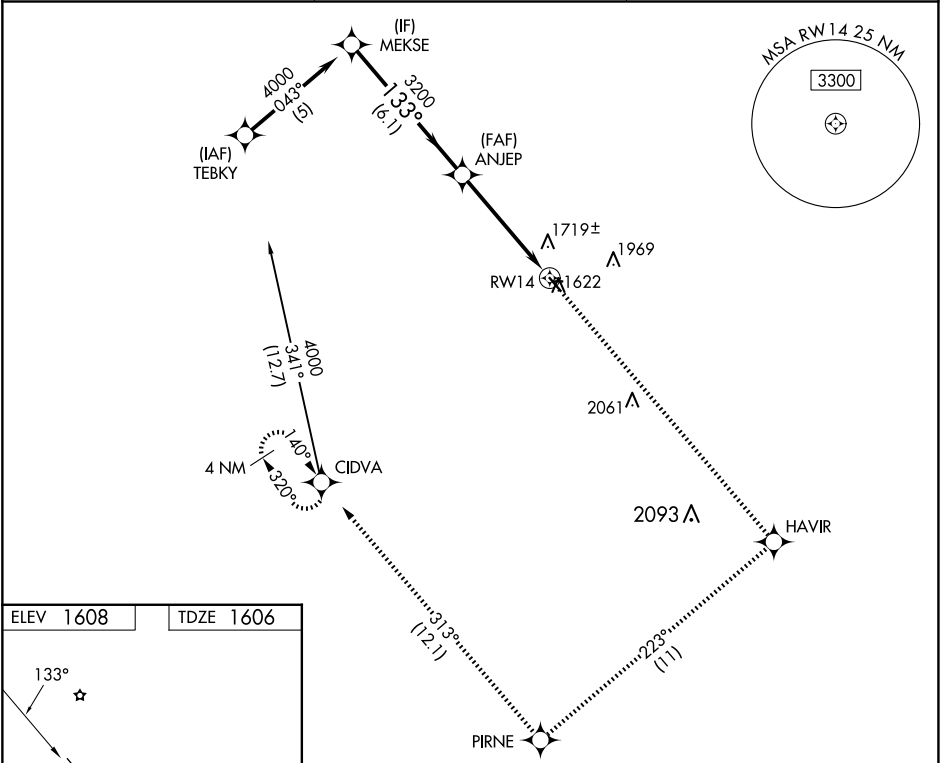
⚠

❄ -35°C

Circling NA to Rwy 8 and 26. Rwy 14 helicopter visibility reduction below ¾ SM NA. When local altimeter setting not received, use Devils Lake altimeter setting and increase all MDAs 140 feet and LNAV visibility Cat C ¾ SM, and Circling visibility Cat C ½ SM.

MISSED APPROACH: Climb to 4000 direct HAVIR and on track 223° to PIRNE on track 313° to CIDVA and hold.

AWOS-3 118.225	MINNEAPOLIS CENTER 132.15 269.6	UNICOM 122.8 (CTAF) 0
-------------------	------------------------------------	--------------------------



MEKSE	4000	HAVIR	PIRNE	CIDVA
ANJEP	3200	tr 223°	tr 313°	
VGSi and descent angles not coincident (VGSi Angle 3.00/TCH 28).				
3.04° TCH 40				
6.1 NM 3.8 NM 1 NM				
CATEGORY	A	B	C	D
LNAV MDA	2100-1	494 (500-1)	2100-1 ¾ 494 (500-1 ¾)	NA
CIRCLING	2240-1	632 (700-1)	2320-2 712 (800-2)	NA

NC-1, 07 AUG 2025 to 04 SEP 2025

NC-1, 07 AUG 2025 to 04 SEP 2025