

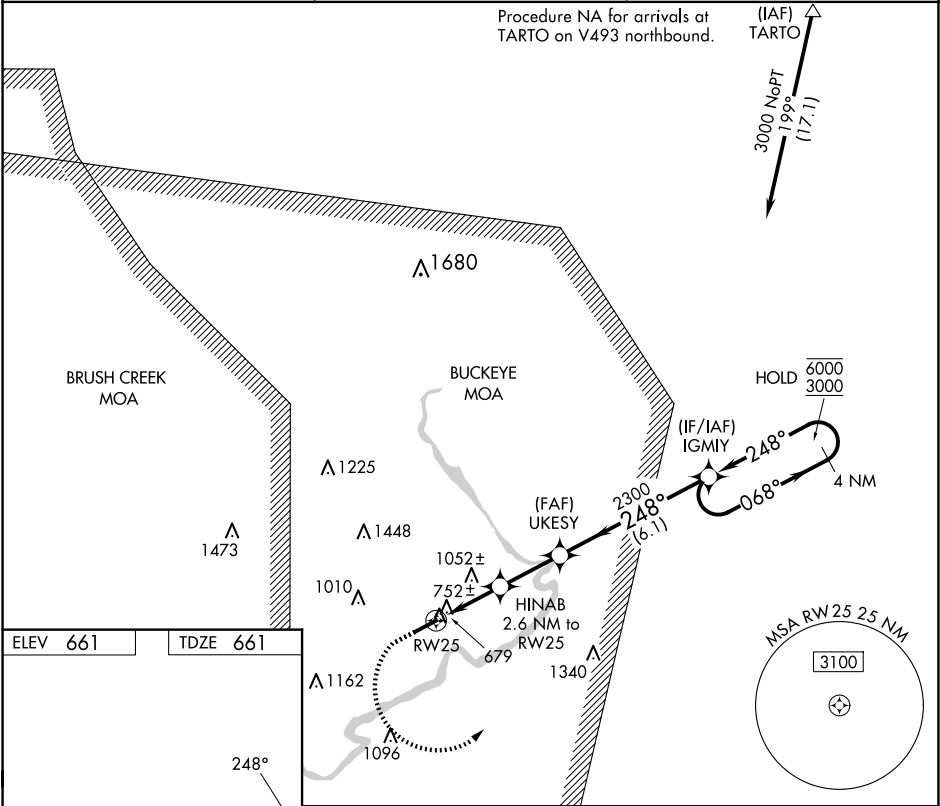
WAAS CH <b>97537</b> <b>W25A</b>	APP CRS <b>248°</b>	Rwy Ldg TDZE <b>661</b> Apt Elev <b>661</b>
--	------------------------	---

RNAV (GPS) RWY 25

PIKE COUNTY (EOP)

RNP APCH - GPS	<div><div><div><div></div><div></div></div><div><div></div><div></div></div></div><div>Rwy 25 helicopter visibility reduction below ¾ SM NA. Circling Rwy 7 NA at night. When local altimeter setting not received, use PMH altimeter setting and increase all MDAs 60 feet and LNAV visibility Cat C/D ½ SM, and LP visibility Cat C/D ½ SM, and Circling visibility Cat A/B/C ¼ SM. VDP NA when using PMH altimeter setting.</div></div>	MISSED APPROACH: Climb to 1120 then climbing left turn to 3000 direct IGMiy and hold.
----------------	--	---

AWOS-3PT <b>121.45</b>	INDIANAPOLIS CENTER <b>135.575 290.5</b>	UNICOM <b>123.0 (CTAF)</b>
---------------------------	---	-------------------------------



ELEV 661	TDZE 661	<div><div><div><div></div><div></div></div><div><div></div><div></div></div></div><div>1120 3000 IGMiy</div><div>VGSI and descent angles not coincident (VGSI Angle 3.00/TCH 25).</div><div>4 NM Holding Pattern</div><div><div><div><div></div><div></div></div><div><div></div><div></div></div></div><div>HINAB 2.6 NM to RW25</div><div>1.1 NM to RW25</div><div>1520 3.00° TCH 40</div><div>1.1 NM 1.6 NM 2.4 NM 6.1 NM</div><div>UKESY 2300</div><div>IGMiy</div><div>068° 248° 6000 3000</div></div></div>			
REIL Rwy 7 and 25 1		PIKE COUNTY (EOP)			
MIRL Rwy 7-25 1		RNNAV (GPS) RWY 25			