

APP CRS
165°

Rwy Ldg
7399
TDZE
4708
Apt Elev
4724

RNAV (GPS) RWY 16

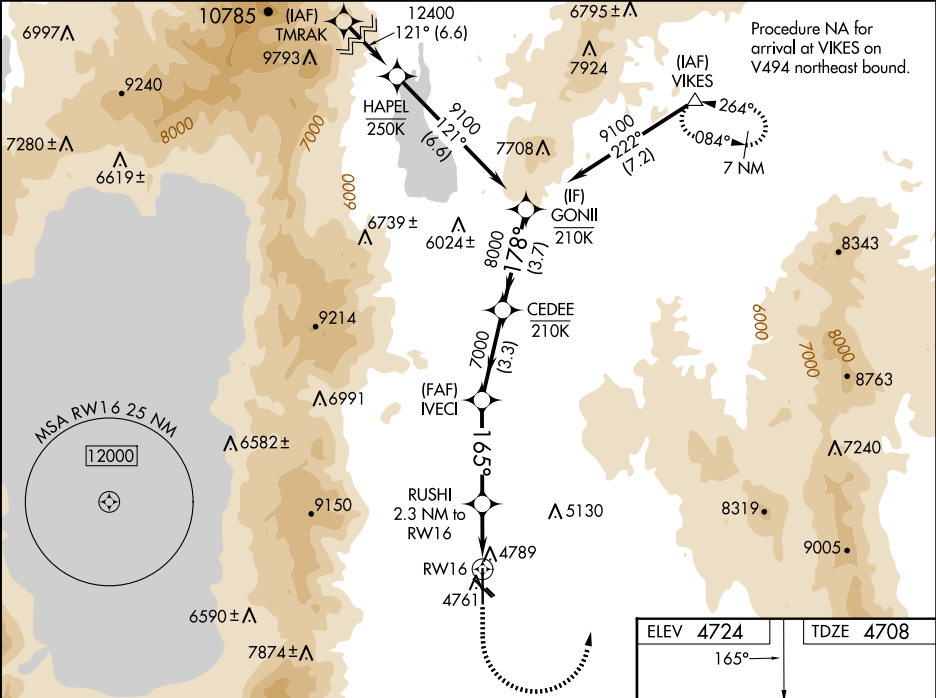
MINDEN-TAHOE (MEV)

RNP APCH - GPS.

Baro-VNAV NA. Circling NA for Cat D southwest of Rwy 12 and west of Rwy 34. Circling NA to Rws 12G and 30G.

MISSED APPROACH: (Do not exceed 210K until VIKES) Climb to 7500, then climbing left turn to 11000 direct VIKES and hold, continue climb-in-hold to 11000.
*Missed approach requires minimum climb of 245 feet per NM to 9200.
#Missed approach requires minimum climb of 310 feet per NM to 9400.

AWOS-3PT 119.325	NORCAL APP CON 119.2 279.55	CLNC DEL 133.25	UNICOM 123.05 (CTAF) 0
---------------------	--------------------------------	--------------------	---------------------------



GONII		VGSI and RNAV glidepath not coincident (VGSI Angle 3.00/TCH 40).		7500	11000	VIKES
CEDEE		IVECI		RUSHI	RW16	
9100		7000		2.3 NM to RW16	0.9 NM to RW16	
178°		165°		RW16		
8000		5620				
GP 3.50° TCH 45						
3.7 NM		3.3 NM		3.7 NM		1.4 NM
3.7 NM		1.4 NM		0.9 NM		
CATEGORY	A	B	C	D		
LNAV/ VNAV	DA*	5106-1½ 398 (400-1½)				
LNAV/ VNAV	DA	6174-5 1466 (1500-5)				
LNAV	MDA#	5040-1 332 (400-1)				
LNAV	MDA	5600-1¼ 892 (900-1¼)	6020-3 1312 (1300-3)			
CIRCLING	5600-1¼ 876 (900-1¼)	6020-3 1296 (1300-3)		6440-3 1716 (1800-3)		

