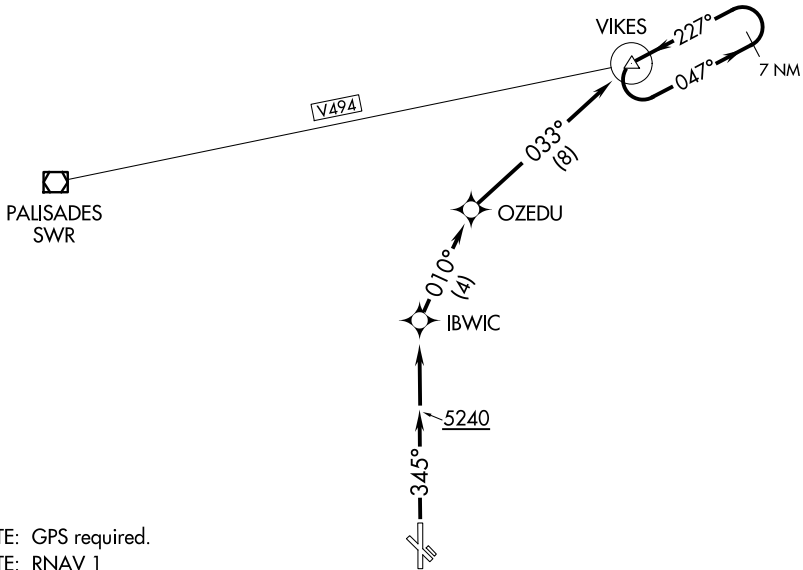


## MINDEN TWO DEPARTURE (OBSTACLE) (RNAV)

RENO TOWER  
118.7 257.8  
NORCAL DEP CON  
119.2 279.55



NOTE: RNAV 1

Rwys 16, 12, 30: NA - obstacles.

Rwy 34: Standard with a minimum climb of 413' per NM to 7800.

Rwy 34: Fence 235' from DER, 302' right of centerline, 7' AGL/471.4' MSL.

NOTE: Chart not to scale.

**TAKEOFF RUNWAY 34:** Climb heading 345° to 5240 then direct IBWIC, then on track 010° to OZEDU, then on track 033° to VIKES, then climb in VIKES holding pattern (hold NE, left turn, 227° inbound) to cross VIKES at or above MEA/MCA for assigned route of flight.

MINDEN TWO DEPARTURE (OBSTACLE) (RNAV)  
(MINDN2.VIKES) 15DEC11MINDEN, NEVADA  
MINDEN-TAHOE (MEV)

SW-4, 07 AUG 2025 to 04 SEP 2025