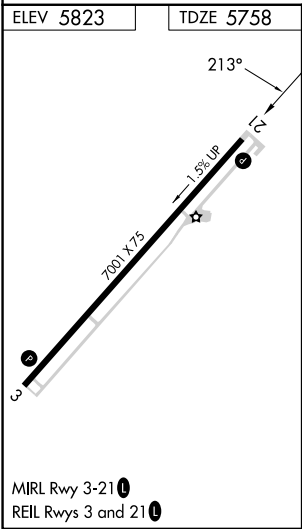
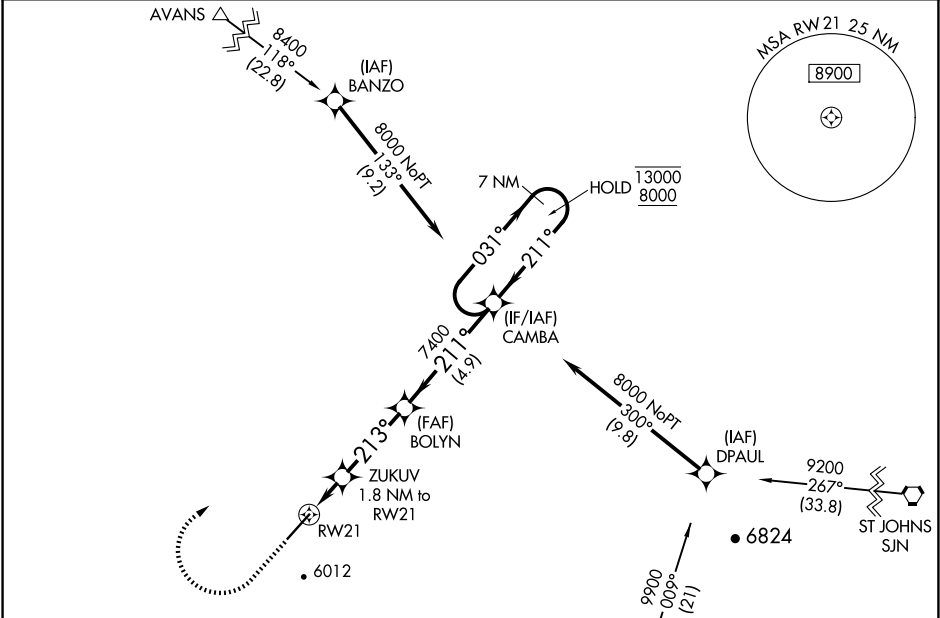


WAAS CH 53344 W21A	APP CRS 213°	Rwy Idg TDZE Apt Elev	7001 5758 5823
--	------------------------	-----------------------------	---

RNAV (GPS) RWY 21

TAYLOR (TYL)

RNP APCH-GPS. When local altimeter setting not received, procedure NA. For uncompensated Baro-VNAV systems, LNAV/VNAV NA below 26°C or above 54°C.		MISSED APPROACH: Climb to 6300 then climbing right turn to 8000 direct CAMBA and hold.
AWOS-3PT 119.075	ALBUQUERQUE CENTER 132.9 239.05	UNICOM 122.7 (CTAF) 1



6300 8000 CAMBA		VGSI and RNAV glidepath not coincident (VGSI Angle 3.00/TCH 43).		CAMBA 7 NM Holding Pattern	
ZUKUV 1.8 NM to RWY 21		BOLYN 7400		031° → 13000 ← 211° 8000	
RWY 21 1.3 NM to RWY 21		6340 213°		7400 211°	
1.3 NM 0.5 NM 3.3 NM 4.9 NM				GP 3.00° TCH 52	
CATEGORY	A	B	C	D	
LPV DA	6008-¾ 250 (200-¾)				
LNAV/VNAV DA	6008-¾ 250 (200-¾)				
LNAV MDA	6180-1 422 (400-1)		6180-1¼ 422 (400-1¼)		
CIRCLING	6320-1 497 (500-1)	6440-1 617 (700-1)	6440-1¾ 617 (700-1¾)	6480-2 657 (700-2)	

SW-4, 07 AUG 2025 to 04 SEP 2025

SW-4, 07 AUG 2025 to 04 SEP 2025