

ATMORE, ALABAMA

AL-9420 (FAA)

19283

WAAS CH <b>40031</b> <b>W18A</b>	APP CRS <b>183°</b>	Rwy Idg TDZE Apt Elev	<b>5001</b> <b>286</b> <b>286</b>
--	------------------------	-----------------------------	---

## RNAV (GPS) RWY 18

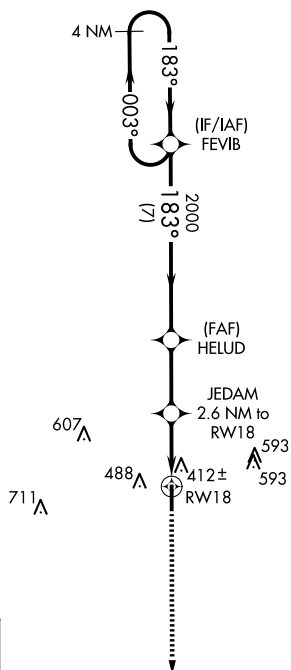
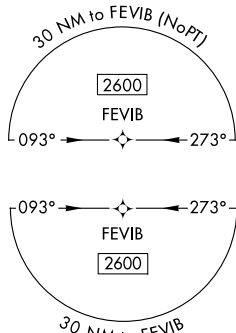
ATMORE MUNI (ØR1)



Baro-VNAV NA. Helicopter visibility reduction below  
1 SM NA. DME/DME RNP-0.3 NA.  
Use Brewton altimeter setting.

**MISSED APPROACH:** Climb to 2600 direct GOKDE and hold.

12J AWOS-3PT <b>119.325</b>	PENSACOLA APP CON <b>127.35 291.625</b>	UNICOM <b>122.8</b> (CTAF) <b>0</b>
--------------------------------	--	--



A 777

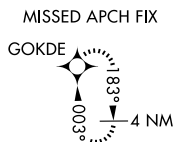


Diagram of a vertical pole structure. The pole is labeled with dimensions 5001 X 80. At the top, there is a marker '8 l' and a direction indicator '183° to RW18'. Below the pole, there is a marker 'd' with a star symbol, and a marker 'P' with a circle symbol. The pole is supported by a base labeled '36'. The diagram is associated with 'ELEV 286' and 'TDZE 286'.

2600 MSL  
↑  
\*LNAV only.

GOKDE

VGSB and RNAV glidepath not coincident (VGSB Angle 3.00/TCH 40).

4 NM Holding Pattern

FEVIB

JEDAM 2.6 NM to RW18

HELUD 2000

183°

003° → 2600

← 183°

GP 3.00° TCH 52

2.6 NM 2.6 NM 7 NM

1160 2000

CATEGORY	A	B	C	D
LPV DA	613-1 327 (400-1)			
LNAV/VNAV DA	653-1 367 (400-1)			
LNAV MDA	740-1	454 (500-1)	740-1 <sup>3</sup> / <sub>8</sub>	454 (500-1 <sup>3</sup> / <sub>8</sub> )
CIRCLING	880-1	594 (600-1)	980-2 694 (700-2)	1000-2 <sup>1</sup> / <sub>4</sub> 714 (800-2 <sup>1</sup> / <sub>4</sub> )

ATMORE, ALABAMA

Amdt 2 01FEB18

31°01'N-87°27'W

ATMORE MUNI (ØR1)

RNAV (GPS) RWY 18

SE-4, 07 AUG 2025 to 04 SEP 2025

SE-4, 07 AUG 2025 to 04 SEP 2025