

WAAS CH <b>40117</b> <b>W36A</b>	APP CRS <b>355°</b>	Rwy Idg TDZE <b>1433</b> Apt Elev <b>1435</b>
----------------------------------------	------------------------	-----------------------------------------------------

RNAV (GPS) RWY 36

QUENTIN AANENSON FLD (LYV)

RNP APCH - GPS.

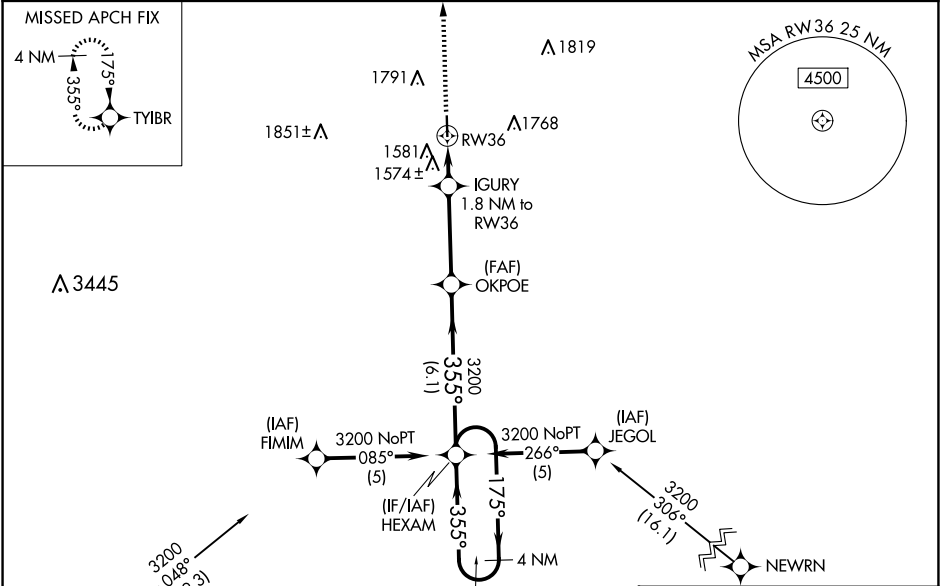
▼

▲

Baro-VNAV and VDP NA when using Pipestone altimeter setting. For uncompensated Baro-VNAV systems, LNAV/VNAV NA below -17°C or above 54°C. When local altimeter setting not received, use Pipestone altimeter setting: increase LPV DA to 1727 feet; increase LNAV/VNAV DA to 1977 feet and visibility all Cats ¼ SM; increase all MDAs 100 feet and visibility LNAV Cats C/D and Circling Cats B/C ¼ SM.

MISSED APPROACH: Climb to 3300 direct TYBR and hold.

AWOS-3 <b>119.825</b>	SIoux FALLS APP CON ★ <b>125.8 284.725</b>	UNICOM <b>122.7 (CTAF) ①</b>
--------------------------	-----------------------------------------------	---------------------------------



ELEV 1435 TDZE 1433

MIRL Rwy 18-36 ①

REIL Rwys 18 and 36 ①

3300 TYBR

VGSI and RNAV glidepath not coincident (VGSI Angle 3.00/TCH 28).

IGURY 1.8 NM to RW36

OKPOE 3200

HEXAM 4 NM Holding Pattern

1.2 NM to RW36

0.6 NM

3.5 NM

6.1 NM

355°

175°

6000

3200

GP 3.00° TCH 51

2040

81

4200 X 75

36

355°

CATEGORY	A	B	C	D
LPV DA	1633-1 200 (200-1)			
LNAV/VNAV DA	1883-1⅜ 450 (500-1⅜)			
LNAV MDA	1840-1 407 (500-1)	1840-1⅛ 407 (500-1⅛)		
CIRCLING	1940-1 505 (600-1)	2160-1 725 (800-1)	2360-2¾ 925 (1000-2¾)	2360-3 925 (1000-3)