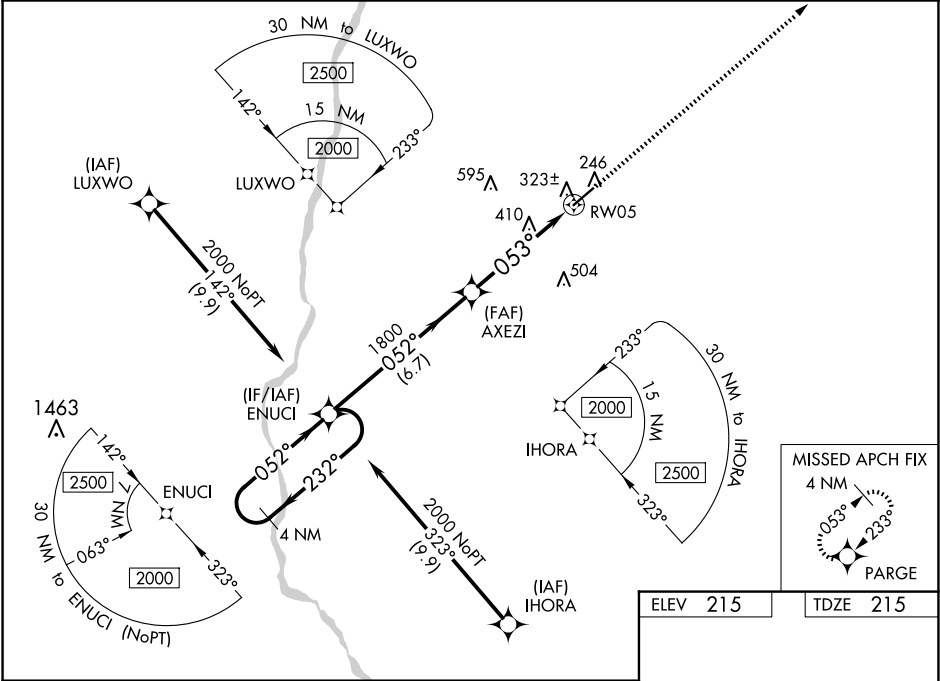


WAAS CH 61121 W05A	APP CRS 053°	Rwy Idg TDZE 215 Apt Elev 215
--	------------------------	---

RNAV (GPS) RWY 5

EARLY COUNTY (BIJ)

RNP APCH - GPS.			MISSED APPROACH: Climb to 3000 direct PARGE and hold.
<div><div><div>▼</div><div>▲</div></div><div>For uncompensated Baro-VNAV systems, LNAV/VNAV NA below -15°C or above 54°C. Rwy 5 helicopter visibility reduction below ¼ SM NA. Baro-VNAV and VDP NA when using Bainbridge altimeter setting. When local altimeter setting not received, use Bainbridge altimeter setting and increase LPV DA to 605 feet and all visibilities ½ SM. Increase LNAV/VNAV DA to 657 feet and all visibilities ¾ SM. Increase all MDA 80 feet and LNAV visibility Cat C/D ¼ SM, and Circling visibility Cat C/D ¼ SM.</div></div>			
AWOS-3PT 118.475	CAIRNS APP CON ★ 125.4 327.125	CTAF 122.9 0	



4 NM Holding Pattern		VGSI and RNAV glidepath not coincident (VGSI Angle 3.00/TCH 34).		3000	PARGE
2000		232°		052°	
GP 3.00° TCH 59		052°		053°	
		1800		1800	
		6.7 NM		3.3 NM	
				1.5	
CATEGORY	A	B	C	D	
LPV DA	528-1		313 (400-1)		
LNAV/VNAV DA	580-1		365 (400-1)		
LNAV MDA	740-1	525 (600-1)	740-1½	525 (600-1½)	
CIRCLING	740-1	525 (600-1)	860-1¾ 645 (700-1¾)	960-2½ 745 (800-2½)	

