

APP CRS	Rwy Ldg	5100
061°	TDZE	3426
	Apt Elev	3426

GPS RWY 6

COLSTRIP (M46)

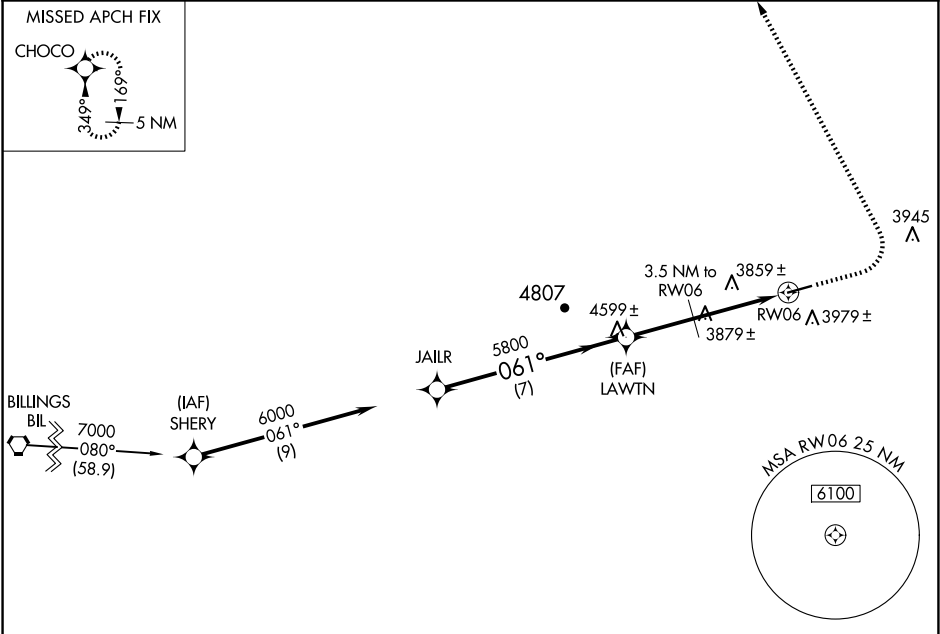
NA

-34°C

When local altimeter not received use Miles City altimeter setting.  
Helicopter visibility reduction below ¾ SM NA.

MISSED APPROACH: Climb to 4500 then climbing left turn to 6000 direct CHOCO WP and hold.

AWOS-3PT 118.525	SALT LAKE CENTER 126.85 305.2	UNICOM 122.7 (CTAF) 0
---------------------	----------------------------------	--------------------------



JAILR

6000

Procedure Turn NA

\*5045 when using Miles City altimeter setting.

4500

6000

CHOCO

JAILR

LAWTN

5800

\*4800

3.5 NM to RW06

RW06

CATEGORY	A	B	C	D
S-6	4220-1 794 (800-1)	4220-1¼ 794 (800-1¼)	4220-2¼ 794 (800-2¼)	NA
CIRCLING	4340-1¼ 914 (1000-1¼)	914 (1000-1¼)	4340-2¾ 914 (1000-2¾)	NA

MILES CITY ALTIMETER SETTING

S-6	NA			
CIRCLING	4580-1¼ 1154 (1200-1¼)	4580-1½ 1154 (1200-1½)	4580-3 1154 (1200-3)	NA

ELEV 3426

TDZE 3426

MIRL Rwy 6-24 0