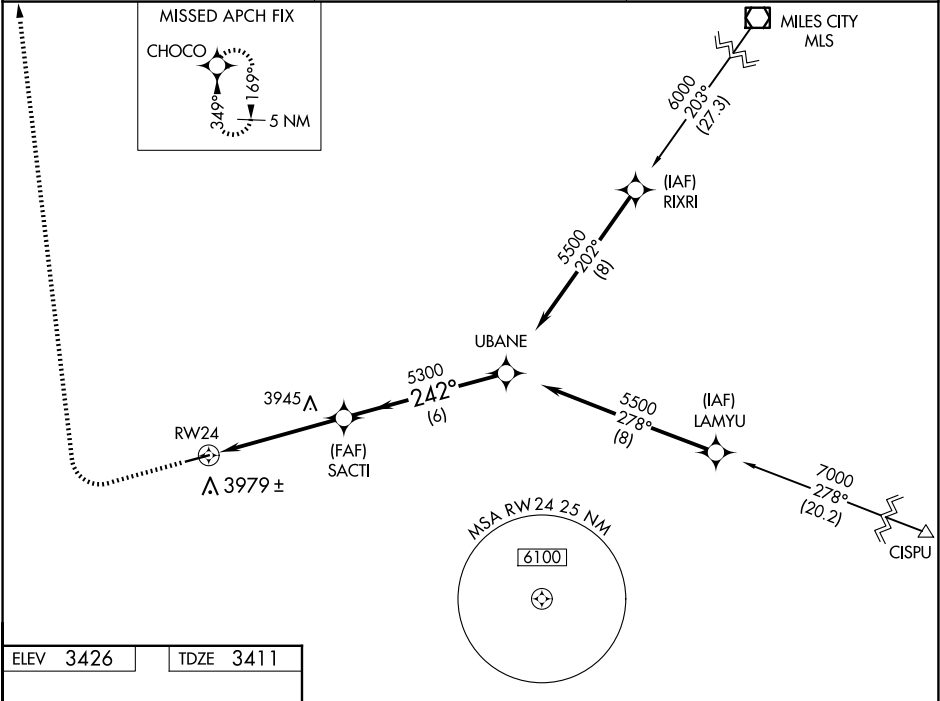


APP CRS	Rwy Ldg	5100
242°	TDZE	3411
	Apt Elev	3426

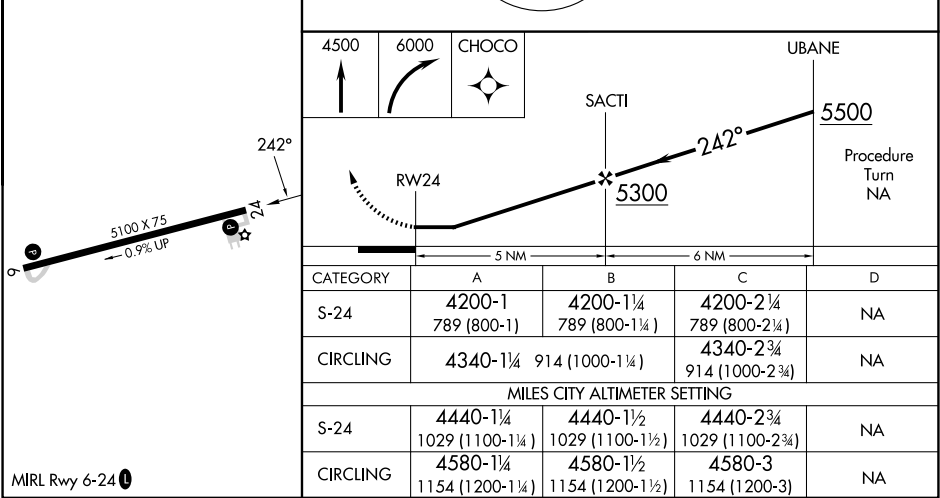
GPS RWY 24
COLSTRIP (M46)

NA -34°C	When local altimeter not received use Miles City altimeter setting. Helicopter visibility reduction below ¾ SM NA.	MISSED APPROACH: Climb to 4500 then climbing right turn to 6000 direct CHOCO WP and hold.
-------------	--	---

AWOS-3PT 118.525	SALT LAKE CENTER 126.85 305.2	UNICOM 122.7 (CTAF)
---------------------	----------------------------------	------------------------



ELEV 3426	TDZE 3411
-----------	-----------



MIRL Rwy 6-24

NW-1, 07 AUG 2025 to 04 SEP 2025

NW-1, 07 AUG 2025 to 04 SEP 2025