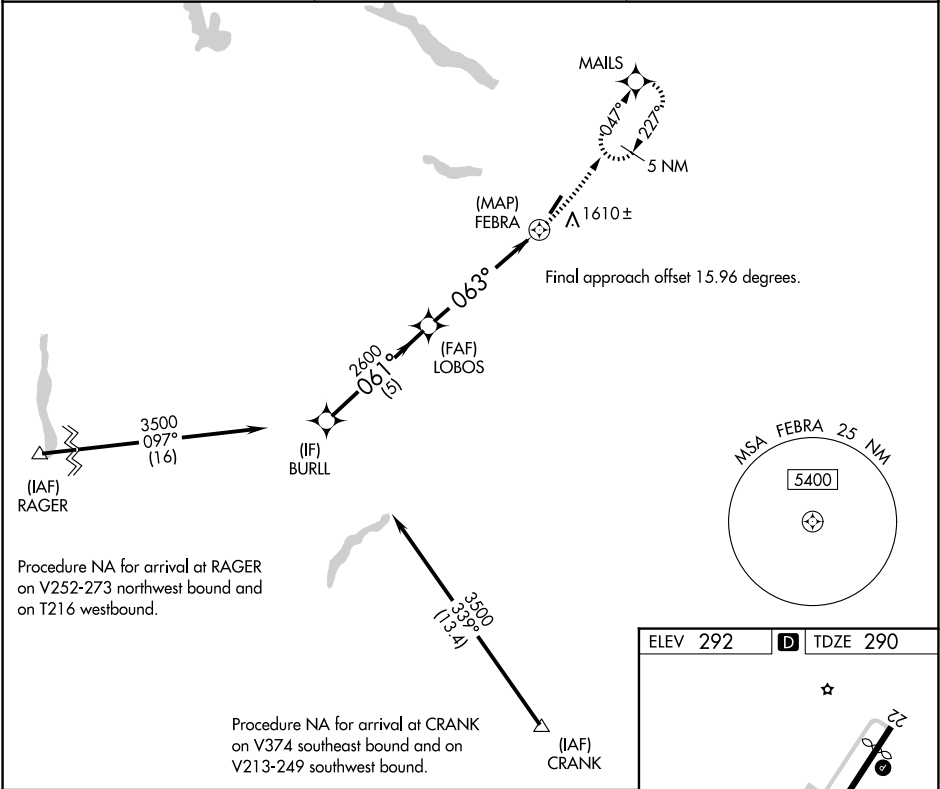


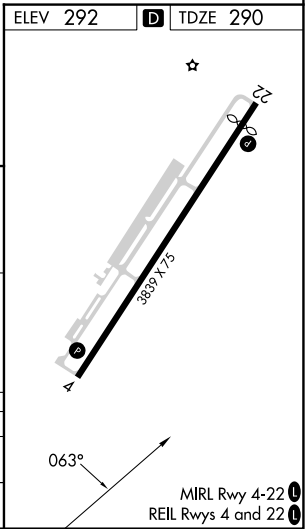
APP CRS	Rwy Ldg	3538
063°	TDZE	290
	Apt Elev	292

RNAV (GPS) RWY 4
JOSEPH Y RESNICK (N89)

RNP APCH.		MISSED APPROACH: Climbing left turn to 6000 direct MAILS and hold, continue climb-in-hold to 6000.
Circling NA southeast of Rwy 4-22. Procedure NA at night. Rwy 4 helicopter visibility reduction below 1 SM NA. Use New York Stewart Intl altimeter setting, when not received, use Poughkeepsie altimeter setting.		
SWF ASOS 124.575	NEW YORK APP CON 132.75 363.1	UNICOM 122.8 (CTAF) 0



Visual Segment - Obstacles.				6000	MAILS
CATEGORY	A	B	C	D	
LNAV MDA	2160-1¼ 1870 (1900-1¼)	2160-1½ 1870 (1900-1½)	NA		
CIRCLING	2160-1¼ 1868 (1900-1¼)	2160-1½ 1868 (1900-1½)	NA		



NE-2, 07 AUG 2025 to 04 SEP 2025

NE-2, 07 AUG 2025 to 04 SEP 2025