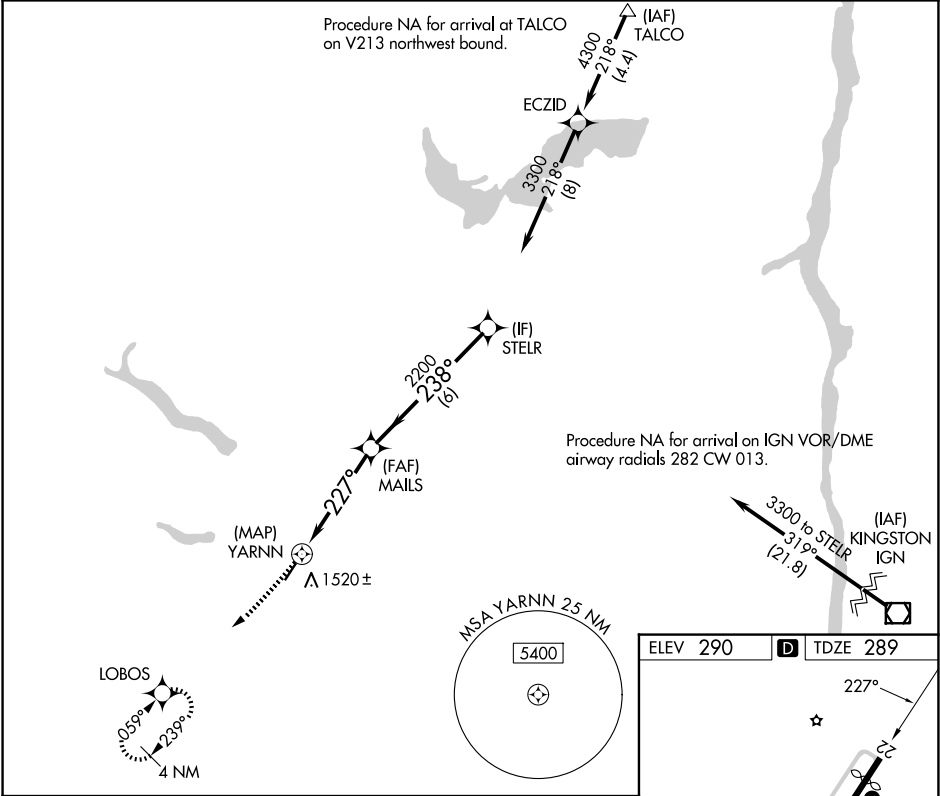


APP CRS	Rwy Ldg	3530
227°	TDZE	289
	Apt Elev	290

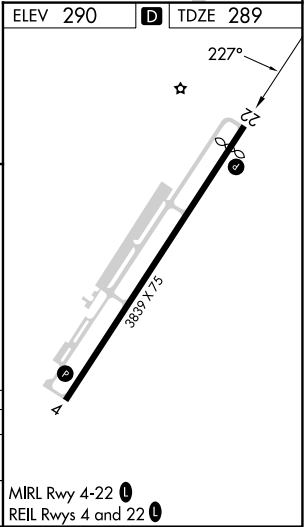
RNAV (GPS) RWY 22

JOSEPH Y RESNICK (N89)

RNP APCH - GPS.		MISSED APPROACH: Climbing right turn to 4000 direct LOBOS and hold, continue climb-in-hold to 4000.
NA	Procedure NA at night. Rwy 22 helicopter visibility reduction below 1 SM NA. Use New York Stewart Intl altimeter setting, when not received, use Poughkeepsie altimeter setting.	
SWF ASOS	NEW YORK APP CON	UNICOM
124.575	132.75 363.1	122.8 (CTAF) 1



4000		LOBOS	Visual Segment - Obstacles.		STELR
					3300
YARNN		MAILES			
0.5		4.5 NM	6 NM		
CATEGORY	A	B	C	D	
LNAV MDA	1980-1¼ 1691 (1700-1¼)	1980-1½ 1691 (1700-1½)	NA		
CIRCLING	1980-1¼ 1690 (1700-1¼)	1980-1½ 1690 (1700-1½)	NA		



NE-2, 07 AUG 2025 to 04 SEP 2025

NE-2, 07 AUG 2025 to 04 SEP 2025