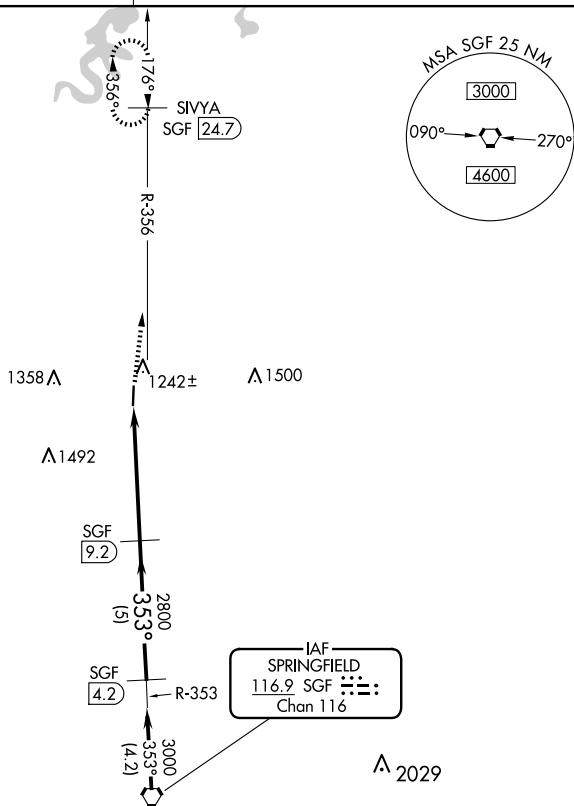


21168

VOR/DME RWY 36
BOLIVAR MUNI (M17)

MISSED APPROACH: Climb to 3000 via SGF R-356 to SIVYA/SGF 24.7 DME and hold.

UNICOM
123.0 (CTAF) **L**

CATEGORY	A	B	C	D
S-36	1700-1 608 (700-1)			NA
C CIRCLING	1700-1 608 (700-1)			NA

BOLIVAR MUNI (M17)
VOR/DME RWY 36

NC-3, 07 AUG 2025 to 04 SEP 2025