

APP CRS	Rwy Idg	4000
179°	TDZE	1092
	Apt Elev	1092

RNAV (GPS) RWY 18

RNP APCH - GPS.

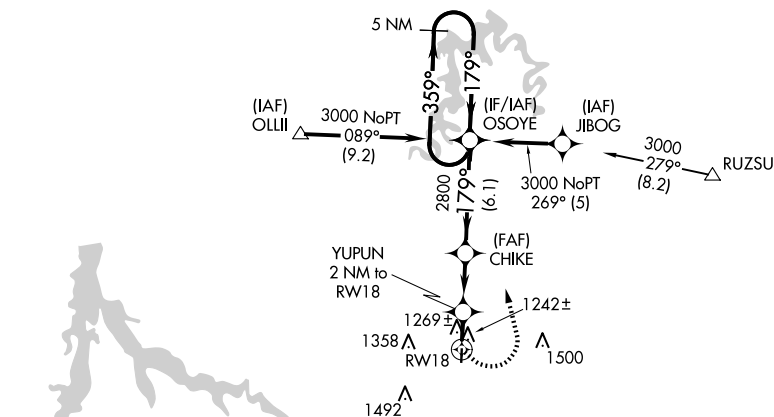
T	Rwy 18 helicopter visibility reduction below 1 SM NA.
A NA	Use Springfield-Branson Ntl altimeter setting. Straight-in and Circling Rwy 18 NA at night.

MISSED APPROACH: Climbing left turn to 3000 direct OSOYE and hold.

SPRINGFIELD APP CON

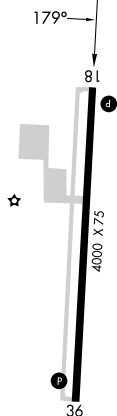
124.95 318.2

UN|COM

123.0 (CTAF) L

Holding not required for arrivals on SGF VORTAC
airway radials 075 CW 272.

ELEV 1092		TDZE 1092
-----------	--	-----------

SPRINGFIELD
SCIENCE


.2029

GA RW 18 25 N4

3100

3000

OSOYE



VGSI and descent angles not coincident (VGSI Angle 3.75/TCH 40). C

OSOYE 5 NM Holding Pattern

RW18

YUPUN
2 NM to
RW18 $\frac{\angle 3.04}{\text{TCH 38}}$

CHIKE

4°

3

359° → 3000
← 179°

	2 NM		3.2 NM		6.1 NM		
CATEGORY	A		B		C		D
LNAV MDA	1600-1 508 (600-1)				1600-1 $\frac{3}{8}$ 508 (600-1 $\frac{1}{8}$)		NA
CIRCLING	1660-1 568 (600-1)				1740-1 $\frac{3}{4}$ 648 (700-1 $\frac{3}{4}$)		NA

MIRL Rwy 18-36 **L**