

WAAS CH <b>69533</b> <b>W18A</b>	APP CRS <b>177°</b>	Rwy Idg TDZE <b>1221</b> Apt Elev <b>1221</b>	<b>3400</b>
----------------------------------------	------------------------	-----------------------------------------------------	-------------

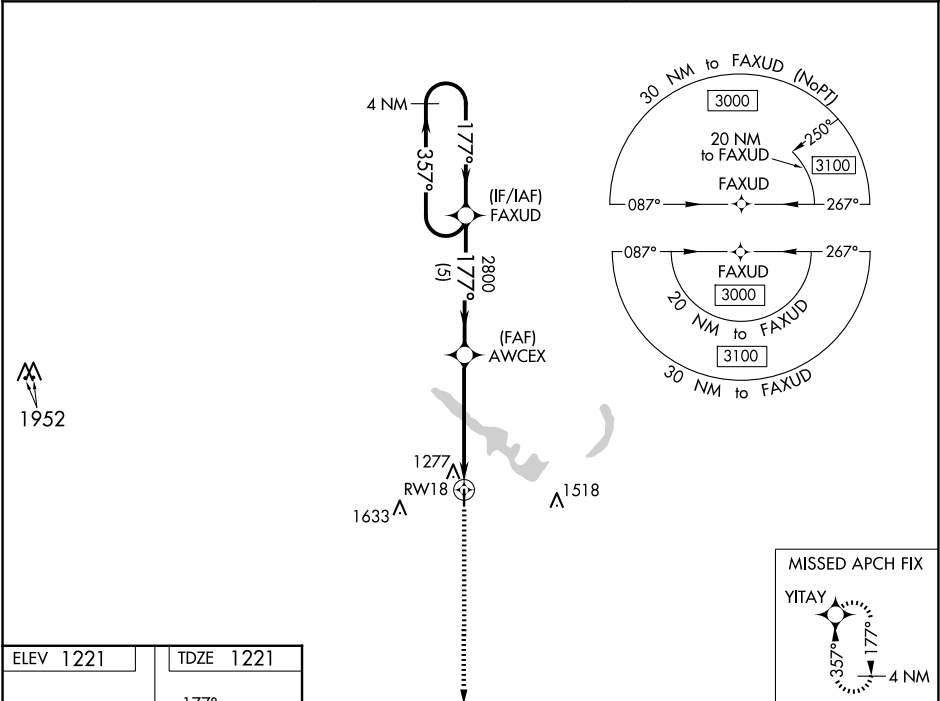
RNAV (GPS) RWY 18

GUTHRIE COUNTY RGNL (GCT)

Baro-VNAV NA. DME/DME RNP-0.3 NA. Use Audubon altimeter setting; when not received, use Carroll altimeter setting and increase LPV DA to 1535, LNAV/VNAV DA to 1748 and all MDA 20 feet; increase LNAV/VNAV all Cats visibility 1/8 mile.

MISSED APPROACH: Climb to 3000 direct YITAY and hold.

ADU AWOS-3 <b>118.075</b>	DES MOINES APP CON <b>123.9 360.7</b>	UNICOM <b>122.8</b> (CTAF) <b>0</b>
------------------------------	------------------------------------------	----------------------------------------



ELEV 1221

TDZE 1221

177°

81

3400 X 60

36

REIL Rws 18 and 36 **0**

MIRL Rwy 18-36 **0**

3000 YITAY		VGSi and RNAV glidepath not coincident (VGSi Angle 3.25/TCH 33).		4 NM Holding Pattern	
AWCEX		2800		357° → 3000	
RW18		2800		← 177°	
4.8 NM		5 NM		GP 3.00° TCH 40	
CATEGORY	A	B	C	D	
LPV DA	1531-1	310 (400-1)	NA		
LNAV/VNAV DA	1744-1¾	523 (600-1¾)	NA		
LNAV MDA	1720-1	499 (500-1)	NA		
CIRCLING	1740-1 519 (600-1)	1880-1 659 (700-1)	NA		