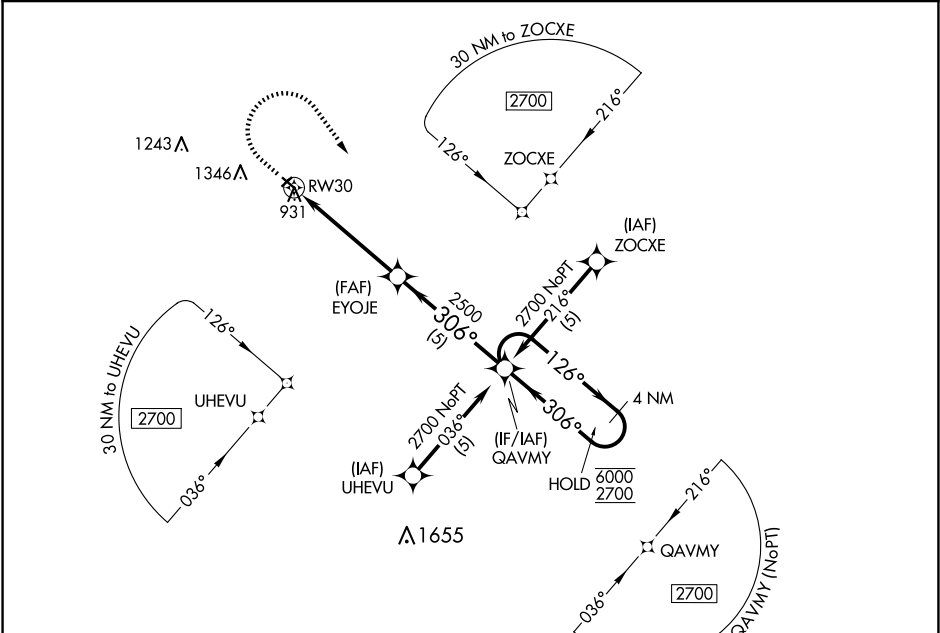


APP CRS	Rwy Idg	3199
306°	TDZE	888
	Apt Elev	888

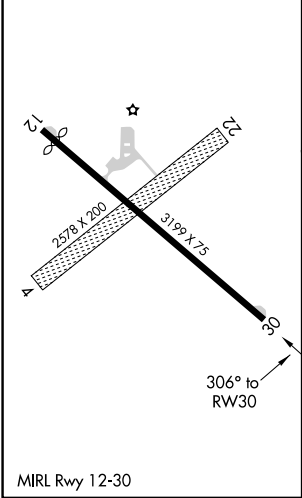
RNAV (GPS) RWY 30  
WARREN MUNI (D37)

RNP APCH.	MISSED APPROACH: Climb to 2000 then climbing right turn to 2700 direct QAVMY and hold.
<div><div>▼</div><div>▲</div></div> Circling NA to Rws 4 and 22. Rwy 30 helicopter visibility reduction below ¾ SM NA. Use Crookston altimeter setting.	

CKN AWOS-3 126.425	GRAND FORKS APP CON ★ 118.1 318.1	UNICOM 122.8 (CTAF)
-----------------------	--------------------------------------	------------------------



ELEV 888	D	TDZE 888
----------	---	----------



2000	2700	QAVMY	QAVMY 4 NM Holding Pattern	
↑	↻	✧		
RW30		EYOJE	QAVMY	4 NM Holding Pattern
≤ 3.04° TCH 40		2500	6000	2700
4.9 NM		5 NM		
CATEGORY	A	B	C	D
LNAV MDA	1480-1	592 (600-1)	NA	
CIRCLING	1480-1	1760-1¼	NA	
	592 (600-1)	872 (900-1¼)		

NC-1, 07 AUG 2025 to 04 SEP 2025

NC-1, 07 AUG 2025 to 04 SEP 2025