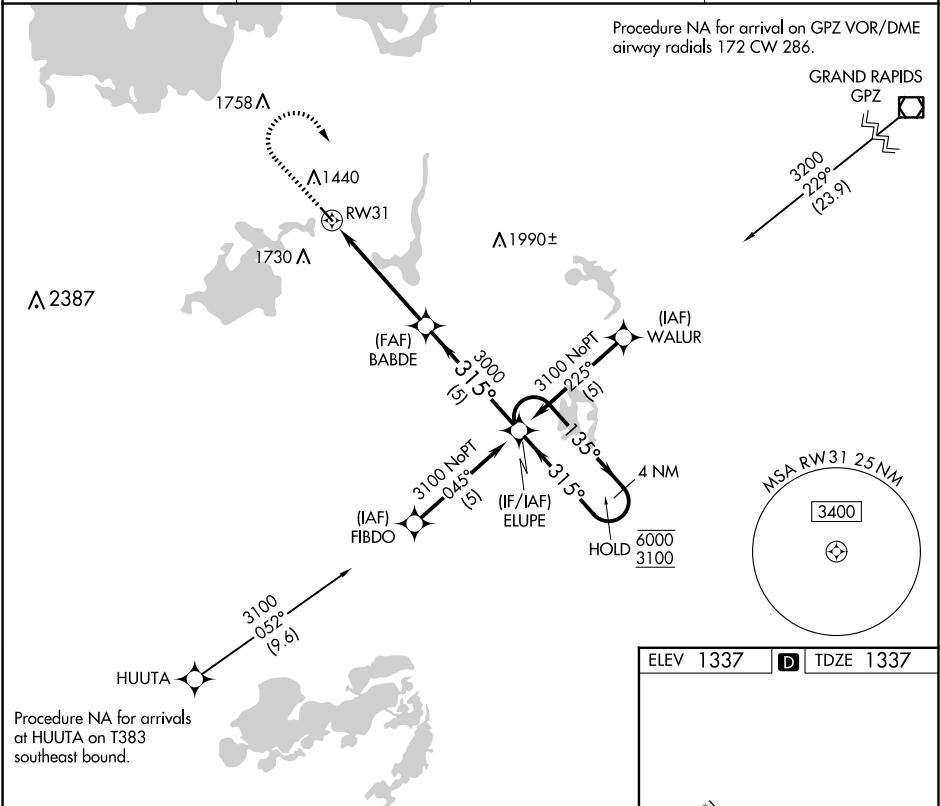



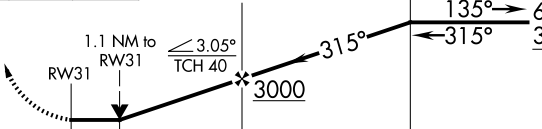



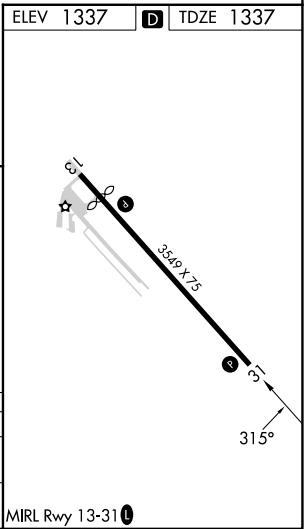
APP CRS	Rwy Idg	3549
315°	TDZE	1337
	Apt Elev	1337

RNAV (GPS) RWY 31  
LONGVILLE MUNI (XVG)

RNP APCH - GPS.		MISSED APPROACH: Climb to 2000 then climbing right turn to 3100 direct ELUPE and hold.	
Circling Rwy 13 NA at night. Rwy 31 helicopter visibility reduction below ¾ SM NA.			
AWOS-3	MINNEAPOLIS CENTER	GCO	CTAF
118.275	118.05 239.0	121.725	122.9 0



2000	3100	ELUPE	VGSI and descent angles not coincident (VGSI Angle 4.00/TCH 28)			
						
CATEGORY	A	B	C	D		
LNAV MDA	1820-1	483 (500-1)	NA			
 CIRCLING	1860-1 523 (600-1)	2080-1 743 (800-1)	NA			



NC-1, 07 AUG 2025 to 04 SEP 2025

NC-1, 07 AUG 2025 to 04 SEP 2025