

WAAS CH 40438 W06A	APP CRS 065°	Rwy Ldg TDZE 1665 Apt Elev 1666
--	------------------------	---

RNAV (GPS) RWY 6
LOGAN COUNTY (6L4)

RNP APCH - GPS.

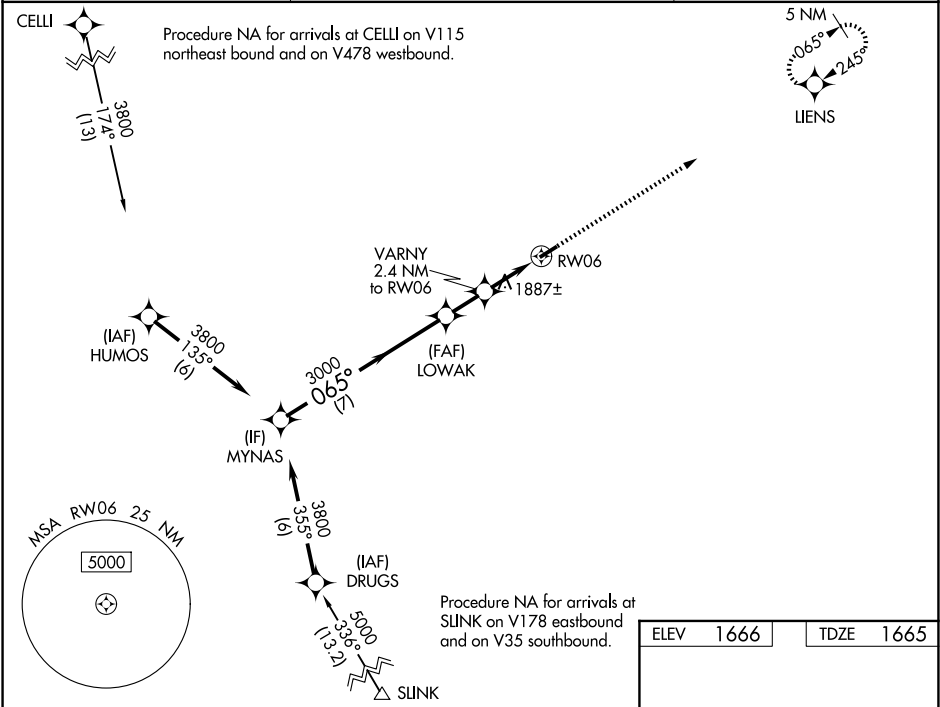
▼

⚠

Rwy 6 helicopter visibility reduction below ¾ SM NA. Baro-VNAV NA. When local altimeter setting not received, use Pineville altimeter setting: increase LPV DA to 2079 feet and LNAV/VNAV DA to 2032 feet and LPV and LNAV/VNAV all Cats visibilities ¼ SM; increase all MDA 80 feet and LNAV Cat C visibility and Circling Cat B visibility ¼ SM. VDP NA when using Pineville altimeter setting.

MISSED APPROACH:
Climb to 4500 direct LIENS and hold.

AWOS-3PT 119,375	CHARLESTON APP CON 119.2 269.125	CTAF 0 122.9
----------------------------	--	-------------------------------



MYNAS

3800

065°

3000

GP 3.00° TCH 58

VGSI and RNAV glidepath not coincident (VGSI Angle 3.00/TCH 47).

4500

LIENS

*LNAV only

LOWAK

3000

VARNY 2.4 NM to RW06

*1.6 NM to RW06

RW06

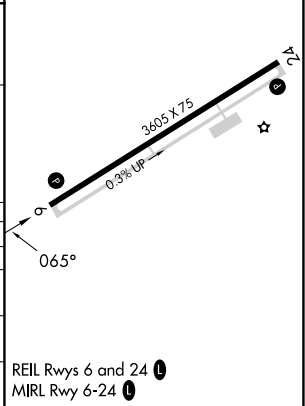
7 NM

1.6 NM

0.8 NM

1.6 NM

CATEGORY	A	B	C	D
LPV DA	2010-1½	345 (400-1½)		NA
LNAV/VNAV DA	1963-1	298 (300-1)		NA
LNAV MDA	2200-1	535 (600-1)	2200-1½ 535 (600-1½)	NA
CIRCLING	2360-1 694 (700-1)	2400-1 734 (800-1)	2720-3 1054 (1100-3)	NA



NE-4, 07 AUG 2025 to 04 SEP 2025

NE-4, 07 AUG 2025 to 04 SEP 2025