

WAAS CH <b>70431</b> <b>W24A</b>	APP CRS <b>245°</b>	Rwy Ldg TDZE <b>1666</b> Apt Elev <b>1666</b>
--	------------------------	---

RNAV (GPS) RWY 24

LOGAN COUNTY (6L4)

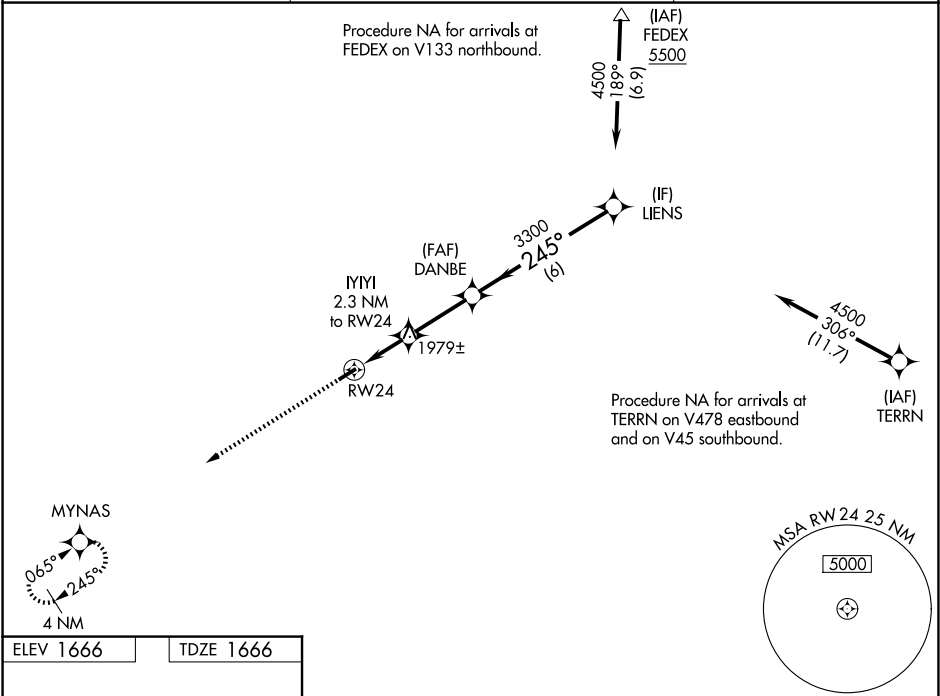
▼

▲

For uncompensated Baro-VNAV systems, LNAV/VNAV NA below -18°C (0°F) or above 54°C (130°F). Baro-VNAV and VDP NA when using Pineville altimeter setting. DME/DME RNP-0.3 NA. When local altimeter setting not received, use Pineville altimeter setting: increase LPV DA to 1985 feet and all visibilities ½ SM; increase LNAV/VNAV DA to 1988 feet and all visibilities ¼ SM; increase all MDA 80 feet and LNAV Cat C visibility and Circling Cat B visibility ¼ SM.

MISSED APPROACH:  
Climb to 3800 direct  
MYNAS and hold.

AWOS-3PT <b>119.375</b>	CHARLESTON APP CON <b>119.2 269.125</b>	CTAF <b>122.9</b>
----------------------------	--	-------------------



ELEV 1666

TDZE 1666

3800

MYNAS

245°

3605 X.75

0.3% UP

\* LNAV only.

IYI 2.3 NM to RW24

DANBE

LIENS

3300

3300

4500

\* 1.7 NM to RW24

\* 2440

GP 3.00° TCH 42

CATEGORY	A	B	C	D
LPV DA	1916-7/8	250 (300-7/8)		NA
LNAV/VNAV DA	1919-7/8	253 (300-7/8)		NA
LNAV MDA	2240-1	574 (600-1)	2240-1 5/8 574 (600-1 5/8)	NA
CIRCLING	2360-1 694 (700-1)	2400-1 734 (800-1)	2720-3 1054 (1100-3)	NA

REIL Rwy 6 and 24

MIRL Rwy 6-24

NE-4, 07 AUG 2025 to 04 SEP 2025

NE-4, 07 AUG 2025 to 04 SEP 2025