

WAAS CH 78430 W07A	APP CRS 066°	Rwy Ldg TDZE 1393 Apt Elev 1411
--	------------------------	---

RNAV (GPS) RWY 7
LEE COUNTY (ØVG)

- ▼

DME/DME RNP-0.3 NA. Rwy 07 helicopter visibility reduction below ¾ SM NA.
- ▲

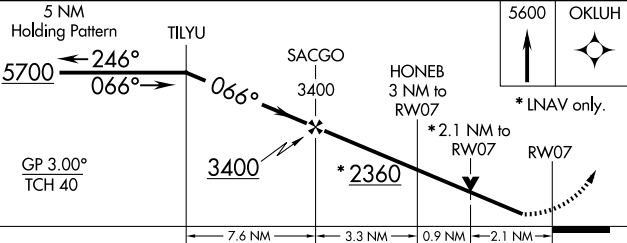
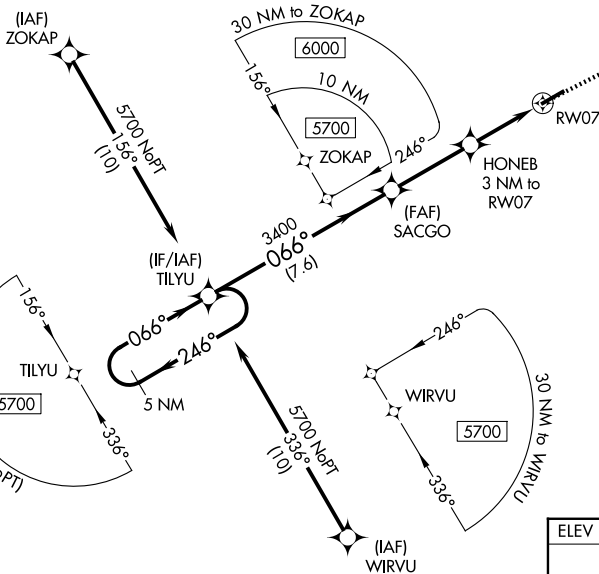
** Missed approach requires minimum climb gradient of 240 feet per NM to 3400.

MISSED APPROACH: Climb to 5600 direct OKLUH and hold, continue climb-in-hold to 5600.

AWOS-3
120.125

ATLANTA CENTER
127.55 269.50

CTAF
122.9 0



CATEGORY	A	B	C	D
LPV DA	** 1643-1	250 (300-1)		NA
LPV DA	1881-1¾	488 (500-1¾)		NA
LNAV/VNAV DA	2024-2½	631 (700-2½)		NA
LNAV MDA	2080-1	687 (700-1)	2080-1¾ 687 (700-1¾)	NA
CIRCLING	2140-1 729 (800-1)	2180-1 769 (800-1)	2600-3 1189 (1200-3)	NA

