

WAAS CH 63022 W06A	APP CRS 067°	Rwy Ldg TDZE 665 Apt Elev 665
--	------------------------	---

RNAV (GPS) RWY 6

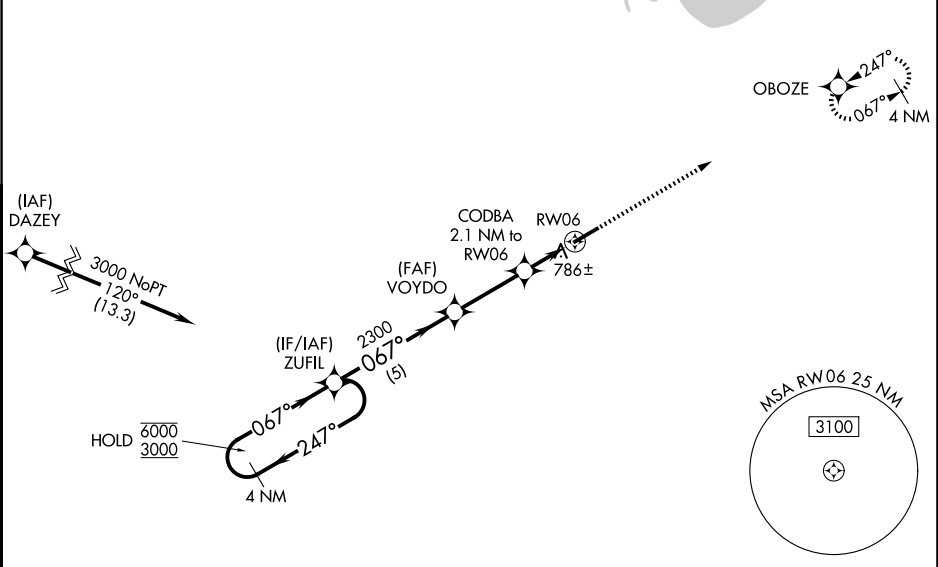
SANDUSKY COUNTY RGNL (S24)

RNP APCH - GPS.

⚠ Baro-VNAV and VDP NA when using TOL altimeter setting. For uncompensated Baro-VNAV systems, LNAV/VNAV NA below -16°C or above 54°C. When local altimeter setting not received, use TOL altimeter setting: increase LPV DA to 1008 feet and all visibilities $\frac{3}{8}$ SM; increase LNAV/VNAV DA to 1041 feet and all visibilities $\frac{3}{8}$ SM; increase all MDA 100 feet and LNAV visibility Cat C and D $\frac{3}{8}$ SM and Circling visibility Cat C and D $\frac{1}{2}$ SM.

MISSED APPROACH:
Climb to 3000 direct
OBOZE and hold.

AWOS-3P 119.575	TOLEDO APP CON 126.1 307.0	UNICOM 123.05 (CTAF) 0
---------------------------	--------------------------------------	----------------------------------



					ELEV 665	TDZE 665
4 NM Holding Pattern					3000 ↑	OBOZE ✧
<p>Diagram details: A holding pattern starting at ZUFIL (6000, 247° inbound, 067° outbound). The pattern turns at VOYDO (2300) and CODBA (2300). Distances: 5 NM from ZUFIL to first turn, 2.9 NM to second turn, 1.1 NM to third turn, and 1 NM to RW06. A 1 NM dashed line leads to RW06. A 5500 x 100 runway is shown at the bottom right with a 067° heading.</p>						
GP 3.00° TCH 44						
CATEGORY	A	B	C	D		
LPV DA	915-¾		250 (300-¾)			
LNAV/ VNAV DA	948-⅞		283 (300-⅞)			
LNAV MDA	1040-1		375 (400-1)			
CIRCLING	1120-1 455 (500-1)	1160-1 495 (500-1)	1380-2 715 (800-2)	1380-2¼ 715 (800-2¼)	REIL Rwy 6 and 24 MIRL Rwy 6-24	