

WAAS CH 42822 W24A	APP CRS 247°	Rwy Ldg TDZE 665 Apt Elev 665
--	------------------------	---

RNAV (GPS) RWY 24

SANDUSKY COUNTY RGNL (S24)

RNP APCH - GPS.

Baro-VNAV and VDP NA when using TOL altimeter setting. For uncompensated Baro-VNAV systems, procedure NA below -16°C or above 54°C. When local altimeter setting not received, use TOL altimeter setting: increase LPV DA to 978 feet and all visibilities $\frac{3}{8}$ SM; increase LNAV/VNAV DA to 1196 feet and all visibilities $\frac{3}{8}$ SM; increase all MDA 100 feet and LNAV visibility Cat C and D $\frac{1}{4}$ SM and Circling visibility Cat C and D $\frac{1}{2}$ SM.

MISSED APPROACH:
Climb to 3000 direct
ZUFIL and hold.

AWOS-3P 119.575	TOLEDO APP CON 126.1 307.0	UNICOM 123.05 (CTAF) 0
---------------------------	--------------------------------------	----------------------------------

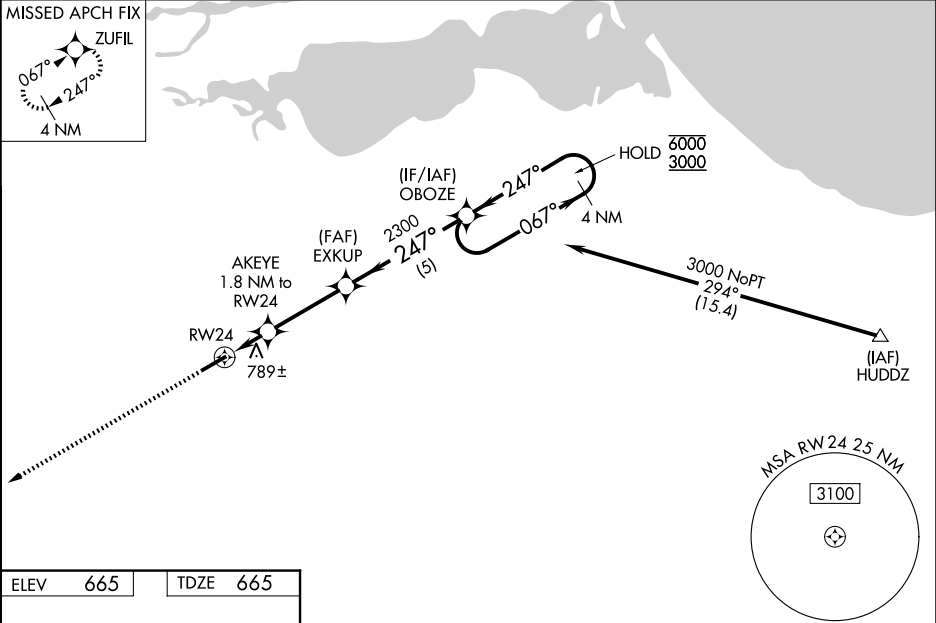
MISSED APCH FIX

ZUFIL

067°

247°

4 NM



ELEV 665 TDZE 665

247°

5500 X 100

REIL Rwy 6 and 24 0
MIRL Rwy 6-24 0

3000	ZUFIL	4 NM	Holding Pattern
OBOZE	AKEYE 1.8 NM to RW24	EXKUP 2300	GP 3.00° TCH 42
1.1 NM	0.7 NM	3.2 NM	5 NM
1260	2300	6000	3000
067°	247°	247°	067°
DA	885- $\frac{3}{4}$	220 (300- $\frac{3}{4}$)	
DA	1103-1 $\frac{1}{2}$	438 (500-1 $\frac{1}{2}$)	
MDA	1040-1	375 (400-1)	1040-1 $\frac{1}{8}$ 375 (400-1 $\frac{1}{8}$)
CIRCLING	1120-1 455 (500-1)	1160-1 495 (500-1)	1380-2 715 (800-2) 1380-2 $\frac{1}{4}$ 715 (800-2 $\frac{1}{4}$)

EC-2, 07 AUG 2025 to 04 SEP 2025

EC-2, 07 AUG 2025 to 04 SEP 2025