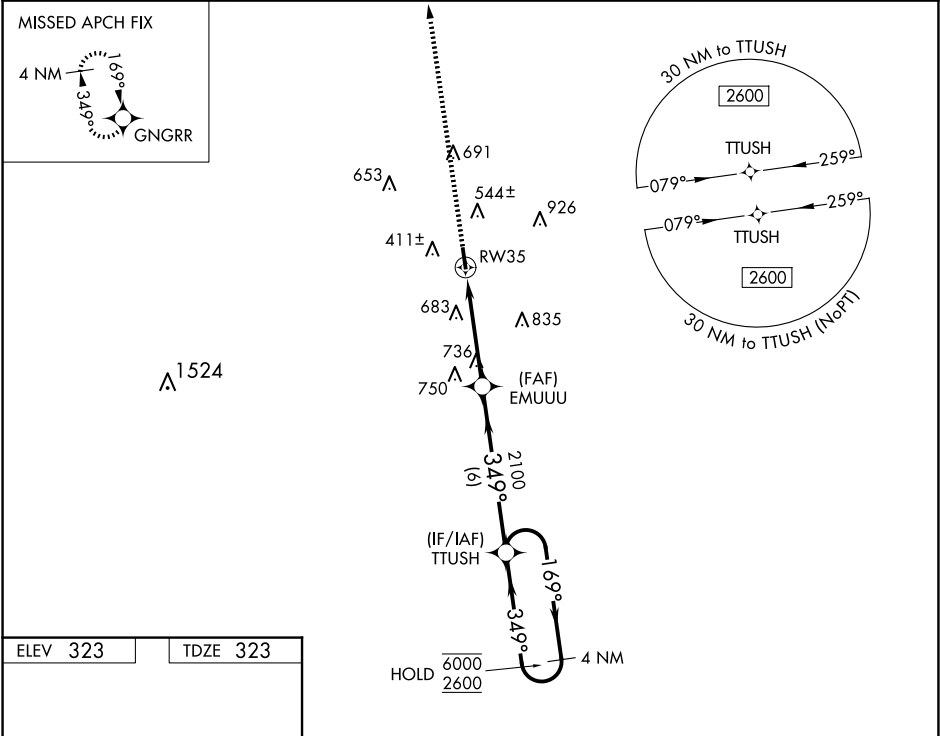


WAAS CH 99744 W35A	APP CRS 349°	Rwy Idg 4000 TDZE 323 Apt Elev 323
--	------------------------	---

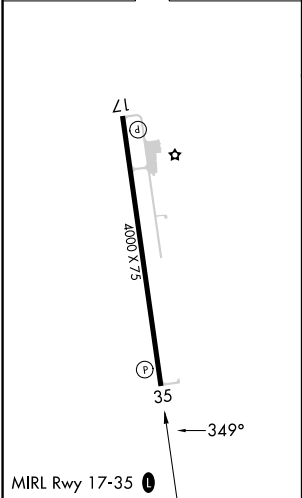
RNAV (GPS) RWY 35
SMITHVILLE CRAWFORD MUNI (84R)




RNP APCH - GPS.	MISSED APPROACH: Climb to 2600 direct GNGRR and hold.
NA	Circling Rwy 17 NA at night. Rwy 35 helicopter visibility reduction below 1 SM NA. Baro-VNAV NA.

GYB AWOS-3 119.225	AUSTIN APP CON 120.875 270.25	CTAF 122.9	123.30
------------------------------	---	----------------------	---------------



ELEV 323	TDZE 323
----------	----------



2600	GNGRR	VGSI and RNAV glidepath not coincident (VGSI Angle 3.00/TCH 40).		4 NM Holding Pattern
		EMUUU	TTUSH	
		2100	169° →	6000
			← 349°	2600
		2100		
		4.3 NM	6 NM	
				GP 3.80° TCH 40
RW35				
CATEGORY	A	B	C	D
LPV DA	648-1	325 (400-1)	NA	
LNAV/VNAV DA	827-1 $\frac{3}{8}$	504 (600-1 $\frac{3}{8}$)	NA	
LNAV MDA	1040-1	717 (800-1)	NA	
CIRCLING	1040-1	717 (800-1)	NA	