

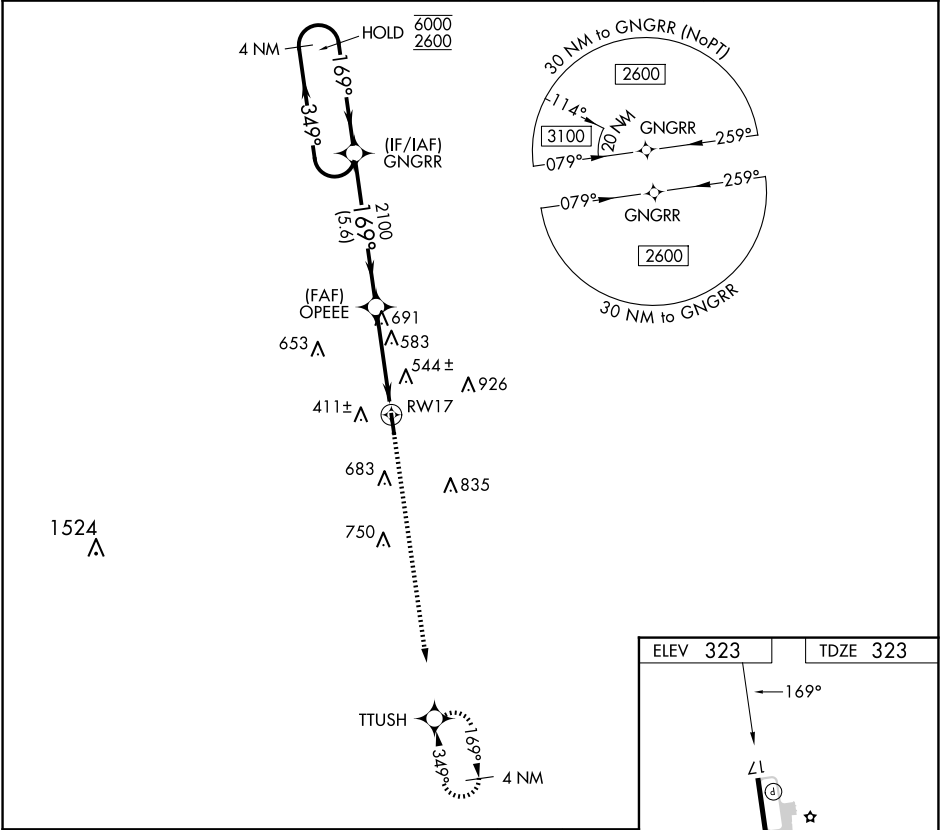
APP CRS	Rwy Idg	4000
169°	TDZE	323
	Apt Elev	323

RNAV (GPS) RWY 17

SMITHVILLE CRAWFORD MUNI (84R)

RNP APCH - GPS.	MISSED APPROACH: Climb to 2600 direct TTUSH and hold.
<div><div>▼</div><div>NA</div></div> <div>Rwy 17 helicopter visibility reduction below 1 SM NA. Straight-in Rwy 17 NA at night, Circling Rwy 17 NA at night.</div>	

GYB AWOS-3 119.225	AUSTIN APP CON 120.875 270.25	CTAF 122.9	123.30
-----------------------	----------------------------------	---------------	--------



4 NM Holding Pattern		GNGRR		2600	TTUSH
<div>6000 ← 349°</div> <div>2600 → 169°</div>		<div>169°</div> <div>2100</div>		<div>4.20 NM</div> <div>TCH 40</div>	<div>RW17</div>
		5.6 NM		3.9 NM	
CATEGORY	A	B	C	D	
RNAV MDA	900-1	577 (600-1)	NA		
CIRCLING	960-1	637 (700-1)	NA		

