

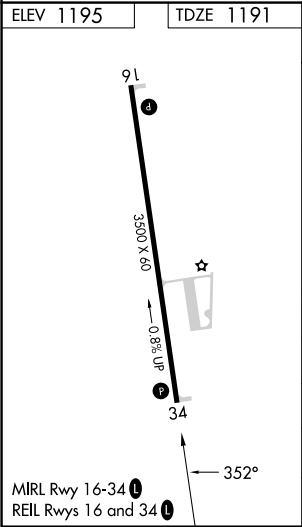
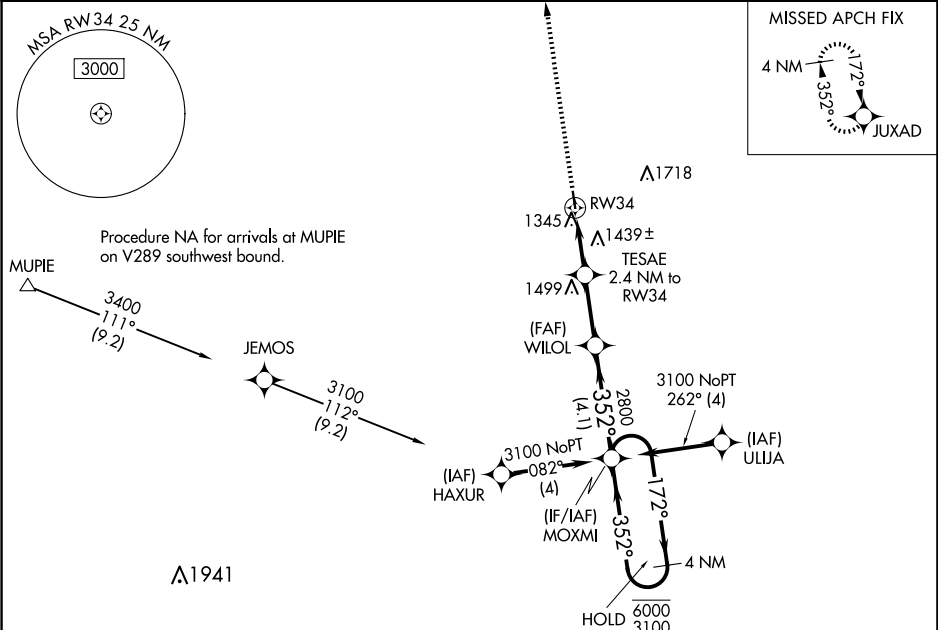
WAAS CH 72728 W34A	APP CRS 352°	Rwy Idg 3500 TDZE 1191 Apt Elev 1195
--	------------------------	---



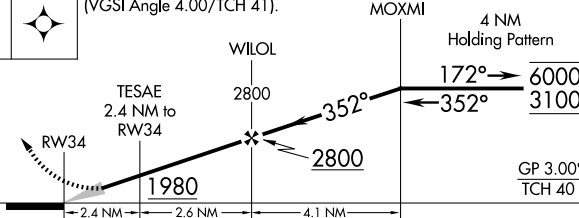

RNAV (GPS) RWY 34

HOUSTON MEML (M48)

RNP APCH-GPS.	MISSED APPROACH: Climb to 3400 direct JUXAD and hold.
<div><div>▼</div><div>NA</div></div> Baro-VNAV NA. Use Fort Leonard Wood altimeter setting, when not received use West Plains altimeter setting.	

TBN ASOS 118.7 229.4	KANSAS CITY CENTER 128.35 284.675	CTAF 122.9 0
--------------------------------	---	------------------------



3400		JUXAD		VGSI and RNAV glidepath not coincident (VGSI Angle 4.00/TCH 41).	
					
CATEGORY	A	B	C	D	
LPV DA	1509-1	318 (400-1)	NA		
LNAV/VNAV DA	1740-1 ⁵ / ₈	549 (600-1 ⁵ / ₈)	NA		
LNAV MDA	1740-1	549 (600-1)	NA		
 CIRCLING	1760-1 565 (600-1)	1880-1 685 (700-1)	NA		