

WAAS CH 48937 W31A	APP CRS 304°	Rwy Idg 3300 TDZE 992 Apt Elev 993
--	------------------------	---

RNAV (GPS) RWY 31
GLENCOE MUNI (GYL)

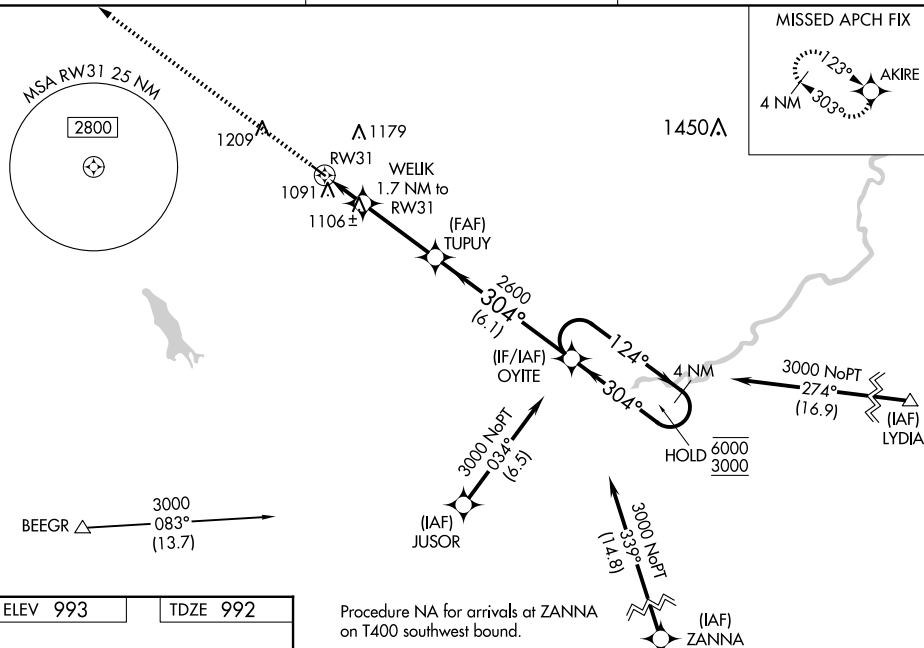
RNP APCH - GPS.

T For uncompensated Baro-VNAV systems, LNAV/VNAV NA below -16°C or above 54°C. Baro-VNAV and VDP NA when using Hutchinson altimeter setting. When local altimeter setting not received, use Hutchinson altimeter setting: increase LPV DA to 1285 feet; increase LNAV/VNAV DA to 1296 feet; increase all MDAs 60 feet.

MISSED APPROACH: Climb to 3000
direct AKIRE and hold.

AWOS-3
119.625

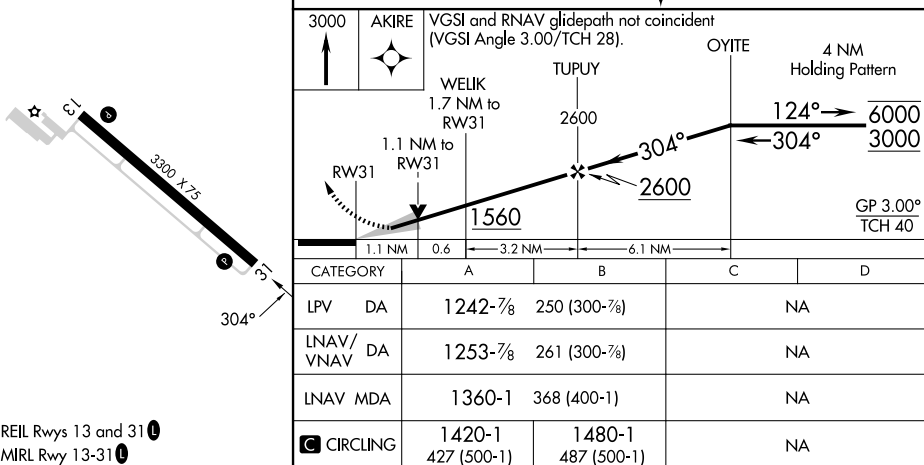
MINNEAPOLIS APP CON
134.7 284.7

UNICOM
122.8 (CTAF) **L**

ELEV 993

TDZE 992

Procedure NA for arrivals at ZANNA
on T400 southwest bound.

REF: Rwy 13 and 31 MIRI Rwy 13-31 **L**

GLENCOE, MINNESOTA

Amdt 1A 16MAY24

44°45'N-94°05'W

GLENCOE MUNI (GYL)

RNAV (GPS) RWY 31