

APP CRS  
009°

Rwy Idg  
TDZE  
Apt Elev

N/A  
N/A  
4492

RNAV (GPS)-B

MCCARLEY FLD (UØ2)

RNP APCH.

▼

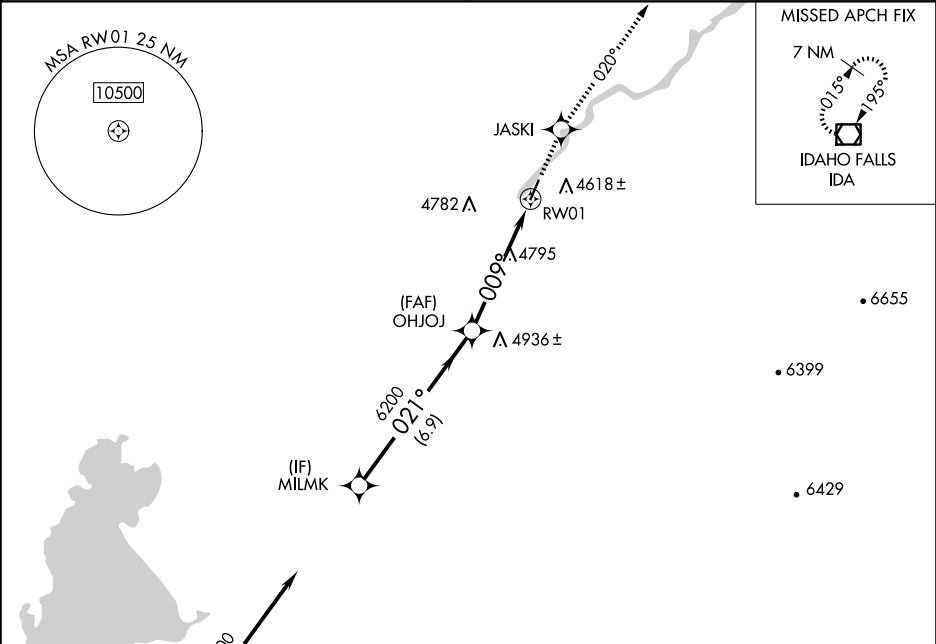
▲ NA

Use Pocatello altimeter setting, when not received use Idaho Falls altimeter setting. Helicopter visibility reduction below 1 SM NA.

MISSED APPROACH: Climb to 7000 direct JASKI and on 020° track to IDA VOR/DME and hold.

SALT LAKE CITY CENTER  
128.35 239.25

UNICOM  
122.8 (CTAF)



HOLD 8500

7000 021° (12)

POCATELLO PIH (IAF)

Holding not required for arrivals at PIH VOR/DME via V21-257 northbound.

ELEV 4492

6791

6865

6429

6399

6655

VGSI and descent angle not coincident (VGSI Angle 3.00/TCH 39).

7000 JASKI 020° tr IDA

MILMK OHJOJ RW01

Procedure Turn NA

6.9 NM 5.2 NM

3.05° TCH 40

009° to RW01

| CATEGORY | A       | B            | C                       | D                       |
|----------|---------|--------------|-------------------------|-------------------------|
| CIRCLING | 5380-1¼ | 888 (900-1¼) | 5380-2¾<br>888 (900-2¾) | 5900-3<br>1408 (1500-3) |

MRL Rwy 1-19