

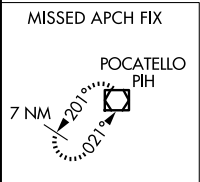
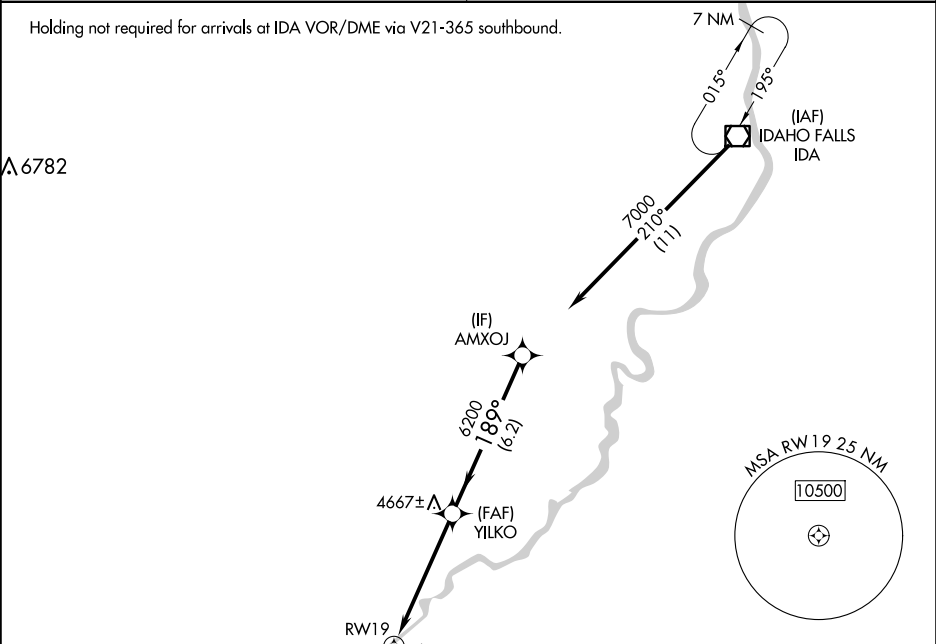
APP CRS	Rwy Idg	N/A
189°	TDZE	N/A
	Apt Elev	4492

RNAV (GPS)-A

MCCARLEY FLD (U02)

RNP APCH.	MISSED APPROACH: Climb to 8500 direct NARBE and on 199° track to PIH VOR/DME and hold.
<div><div>▼</div> Use Pocatello altimeter setting, when not received use Idaho Falls altimeter setting. Helicopter visibility reduction below 1 SM NA.</div>	

SALT LAKE CITY CENTER 128.35 239.25	UNICOM 122.8 (CTAF)
--	------------------------



8500	NARBE	199° tr	PIH	Visual Segment - Obstacles.	AMXOJ
CATEGORY	A	B	C	D	
CIRCLING	5340-1¼	848 (900-1¼)	5380-2¾ 888 (900-2¾)	5900-3 1408 (1500-3)	

