

PRINEVILLE, OREGON

AL-9340 (FAA)

24137

WAAS CH <b>60936</b> <b>W11A</b>	APP CRS <b>093°</b>	Rwy Idg TDZE Apt Elev	<b>5405</b> <b>3246</b> <b>3251</b>
--	------------------------	-----------------------------	---

WAAS CH <b>60936</b> <b>W11A</b>	APP CRS <b>093°</b>	Rwy Idg TDZE Apt Elev	<b>5405</b> <b>3246</b> <b>3251</b>
--	------------------------	-----------------------------	---

WAAS CH <b>60936</b> <b>W11A</b>	APP CRS <b>093°</b>	Rwy Idg TDZE Apt Elev	<b>5405</b> <b>3246</b> <b>3251</b>
--	------------------------	-----------------------------	---

RNAV (GPS) RWY 11  
PRINEVILLE (S39)

PRINEVILLE (S39)

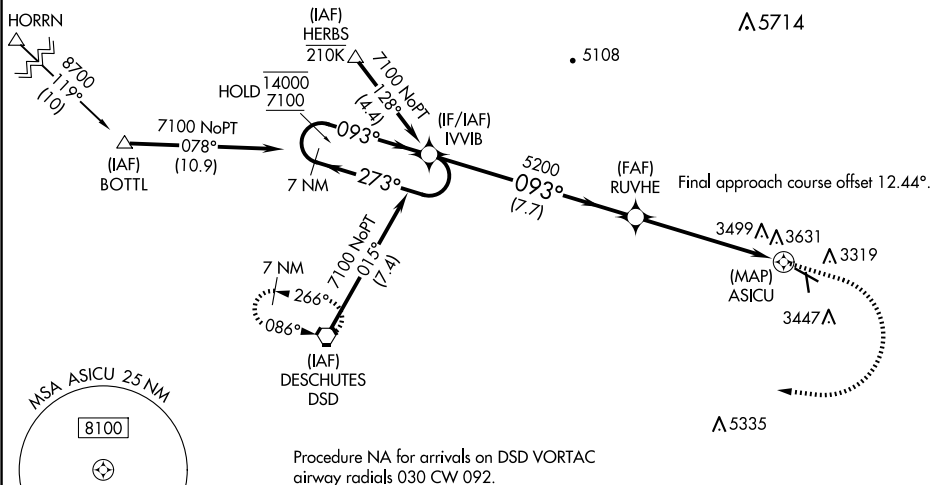

RNP APCH-GPS.

**T** Circling NA for Cat D south of Rwy 11-29.  
**A** Rwy 11 helicopter visibility reduction below  $\frac{3}{4}$  SM NA.  
 Circling Rwy 15 NA at night.

**MISSED APPROACH:** Climb to 5100 then climbing right turn to 7100 direct DSD VORTAC and hold.  
\*Missed approach requires minimum climb of 215 feet per NM to 5400.

AWOS-3PT  
118.325

SEATTLE CENTER  
126.15 269,475

UNICOM  
122.7 (CTAF) 

CATEGORY	A	B	C	D
LP MDA*	3660-1	414 (500-1)	3660-1½	414 (500-1½)
LP MDA	3760-1	514 (600-1)	3760-1¾	514 (600-1¾)
LNAV MDA	3900-1	654 (700-1)	3900-1⅞	654 (700-1⅞)

**CIRCLING**

CATEGORY	A	B	C	D
CIRCLING	3960-1 709 (800-1)	4040-1 789 (800-1)	4040-2¼ 789 (800-2¼)	4040-2½ 789 (800-2½)

