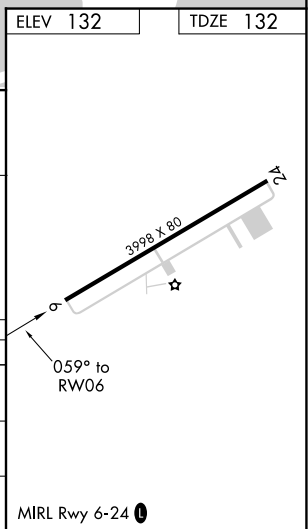


21252

RNAV (GPS) RWY 6
ST ELMO (2R5)

MISSED APPROACH: Climb to 2000 direct DEYPA and left turn via 310° track to HELMU and left turn via 199° track to PLEBE and hold.

CTAF
122.9 **L**

ST ELMO (2R5)
RNAV (GPS) RWY 6