

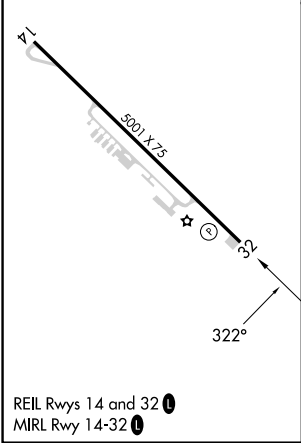
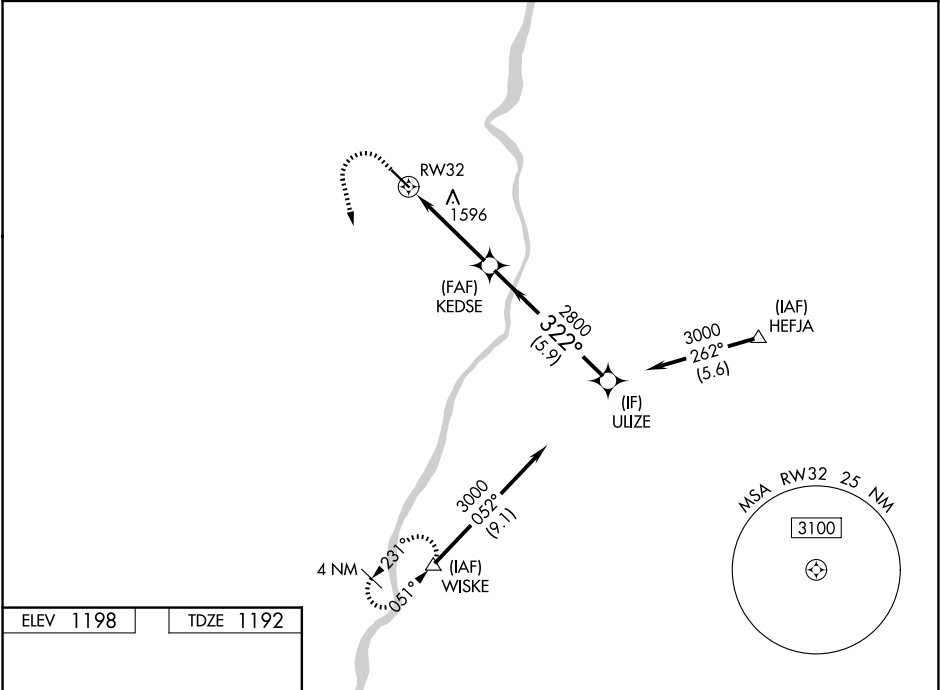
WAAS CH 58339 W32A	APP CRS 322°	Rwy Ldg TDZE Apt Elev	5001 1192 1198
--	------------------------	-----------------------------	---



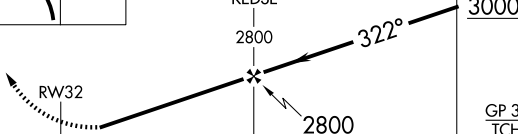
RNAV (GPS) RWY 32

GEARY A BATES/JEFFERSON COUNTY AIRPARK (2G2)

RNP APCH.	MISSED APPROACH: Climb to 2000 then climbing left turn to 3100 direct WISKE and hold.
<div><div></div><div></div></div> <div>Rwy 32 helicopter visibility reduction below ¾ SM NA. Baro-VNAV NA when using Wheeling altimeter setting. For uncompensated Baro-VNAV systems, LNAV/VNAV NA below -17°C or above 54°C. When local altimeter not received, use Wheeling altimeter setting.</div>	

AWOS-3 121.625	HLG ASOS 127.375	PITTSBURGH APP CON 124.75 338.2	UNICOM 122.8 (CTAF) 0
--------------------------	----------------------------	---	---------------------------------



2000	3100	WISKE △	VGSI and RNAV glidepath not coincident (VGSI Angle 3.60°/TCH 41°).		ULIZE
					
CATEGORY	A	B	C	D	
LPV DA	1519-1 327 (400-1)				NA
LNAV/VNAV DA	1972-2½ 780 (800-2½)				NA
LNAV MDA	1880-1	688 (700-1)	1880-2 688 (700-2)	NA	
CIRCLING	1880-1 682 (700-1)	1980-1 782 (800-1)	1980-2¼ 782 (800-2¼)	NA	

RNAV (GPS) RWY 32