

VOR/DME MVE	APP CRS	Rwy Idg
111.6	328°	3715
Chan 53		TDZE 1045
		Apt Elev 1048

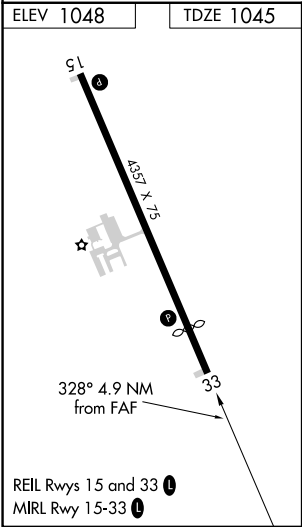
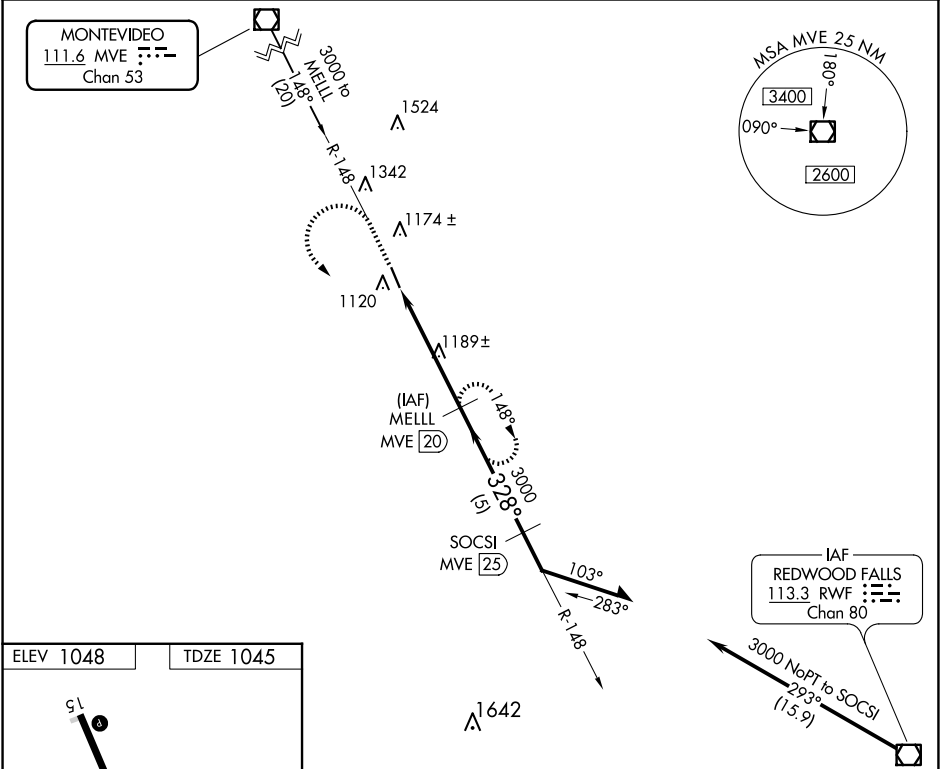
VOR/DME RWY 33

GRANITE FALLS MUNI/LENZEN-ROE-FAGEN MEML FLD (GDB)

⚠ When local altimeter setting not received, use Montevideo altimeter setting and increase all MDAs 40 feet, increase S-33 visibility Cat C ½ SM. Rwy 33 helicopter visibility below ¾ SM NA.

MISSED APPROACH: Climb to 3000, then left turn via R-148 to MELL/MVE 20 DME and hold.

AWOS-3 120.1	MINNEAPOLIS CENTER 127.1 290.2	GCO 121.725	UNICOM 122.8 (CTAF)
------------------------	--	-----------------------	-------------------------------



3000	MELL MVE 20	MELL MVE 20	Remain within 10 NM	
MVE R-148	MVE 15.1	3000	148°	328°
4.9 NM				
CATEGORY	A	B	C	D
S-33	1480-1	435 (500-1)	1480-1¼ 435 (500-1¼)	1480-1½ 435 (500-1½)
CIRCLING	1540-1 492 (500-1)	1580-1 532 (600-1)	1580-1½ 532 (600-1½)	1700-2 652 (700-2)

NC-1, 07 AUG 2025 to 04 SEP 2025

NC-1, 07 AUG 2025 to 04 SEP 2025