

APP CRS
329°

Rwy Idg
TDZE
Apt Elev

3103
954
954

RNAV (GPS) RWY 33

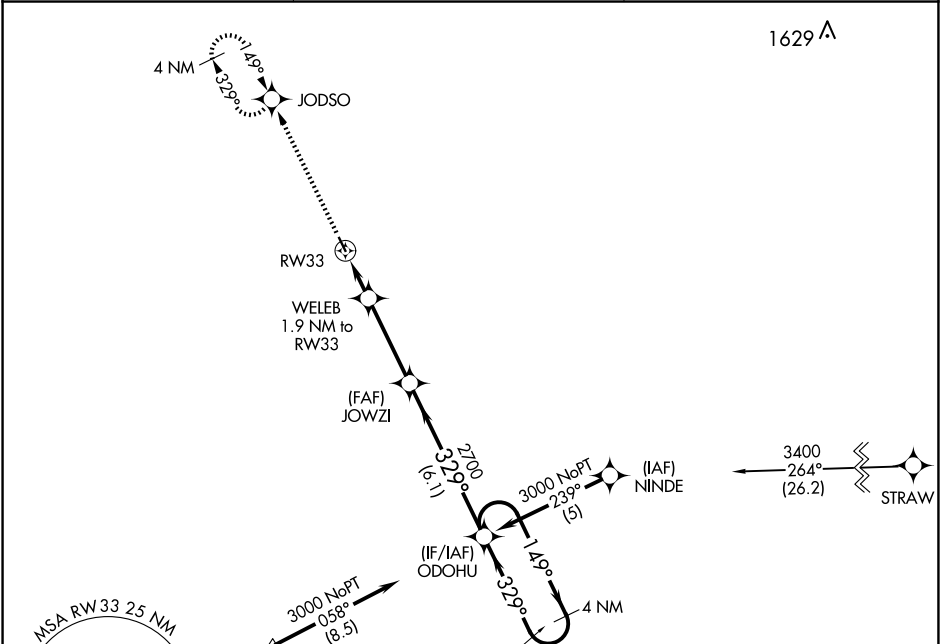
NORMAN COUNTY ADA/TWIN VALLEY (D00)

RNP APCH.

Procedure NA at night. Rwy 33 helicopter visibility reduction below 1 SM NA. Use Hector Intl altimeter setting.

MISSED APPROACH: Climb to 3300 direct JODSO and hold, continue climb-in-hold to 3300.

FAR ASOS 124.5 379.2	FARGO APP CON 120.4 377.15	CTAF 122.9
-------------------------	-------------------------------	---------------



3300 JODSO

↑

↑

WELEB 1.9 NM to RW33

JOWZI

ODOHU

4 NM Holding Pattern

RW33

WELEB 1.9 NM to RW33

JOWZI

ODOHU

4 NM Holding Pattern

1600

2700

6000

3000

1.9 NM

3.4 NM

6.1 NM

329°

149°

329°

3.05°

TCH 45

1600

2700

6000

3000

1.9 NM

3.4 NM

6.1 NM

CATEGORY	A	B	C	D
LNAV MDA	1540-1	586 (600-1)	1540-1¾ 586 (600-1¾)	NA
CIRCLING	1540-1 586 (600-1)	1580-1 626 (700-1)	1600-1¾ 646 (700-1¾)	NA

