

APP CRS

133°

Rwy Idg

4400

TDZE

215

Apt Elev

215

RNAV (GPS) RWY 13

WILLOW (UUO)(PAUO)

NA

Use Wasilla altimeter setting.  
Procedure NA at night.  
DME/DME RNP-0.3 NA.

MISSED APPROACH:

Climbing right turn to 3100 direct ZUSRA and hold.

IYS/PAWS AWOS-3P

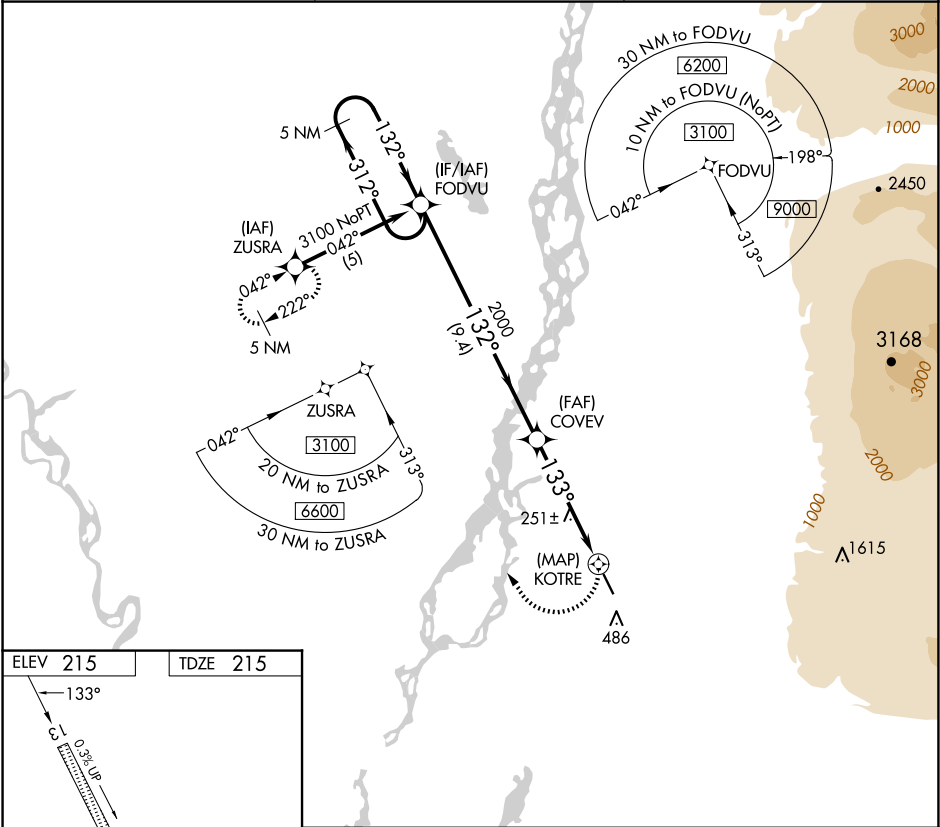
135.25

ANCHORAGE CENTER

133.7 279.6

CTAF

122.8



ELEV 215

TDZE 215

133°

0.3% Up

400 X 75

31

5 NM Holding Pattern

FODVU

3100

312°

132°

132°

COVEV

2000

133°

KOTRE

3100

ZUSRA

CATEGORY	A	B	C	D
LNAV MDA	1220-1¼ 1005 (1100-1¼)	1220-1½ 1005 (1100-1½)	1220-3 1005 (1100-3)	NA
CIRCLING	1220-1¼ 1005 (1100-1¼)	1220-1½ 1005 (1100-1½)	1220-3 1005 (1100-3)	NA