

WAAS CH 53636 W04A	APP CRS 038°	Rwy Idg TDZE Apt Elev	3700 352 354
--	------------------------	-----------------------------	---

RNAV (GPS) RWY 4

WASILLA (IYS) (PAWS)

RNP APCH

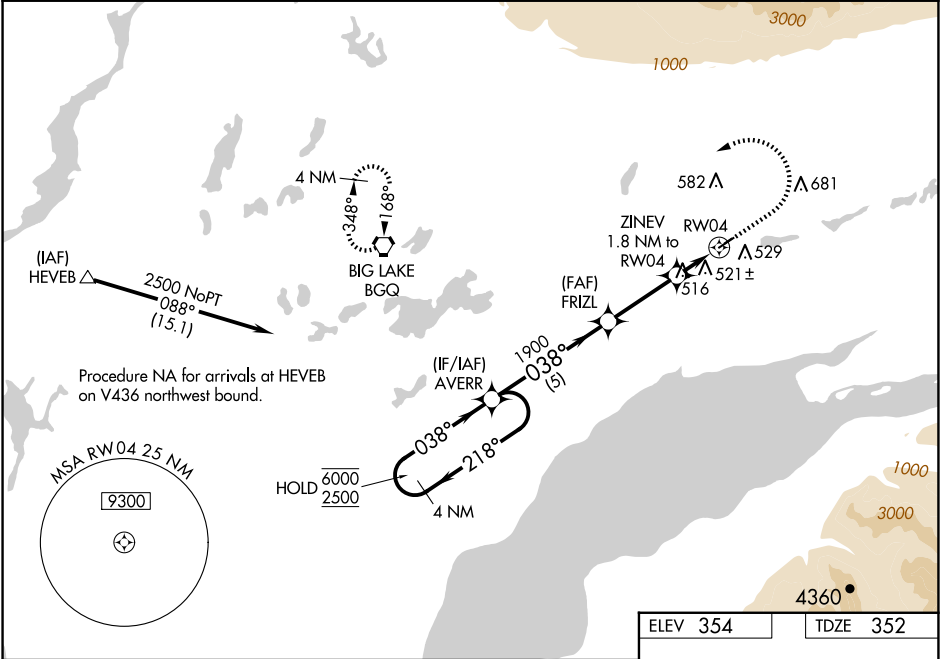
▼

⚠

Circling NA to Rwy 4S and 22S. Baro-VNAV and VDP NA when using Palmer altimeter setting. For uncompensated Baro-VNAV systems, LNAV/VNAV NA below -20°C or above 54°C. When local altimeter setting not received, use Palmer altimeter setting and increase all DA 46 feet, all MDA 60 feet and all visibilities ¼ mile.

MISSED APPROACH: Climb to 1000 then climbing left turn to 3000 direct BGQ VORTAC and hold.

AWOS-3P 135.25	ANCHORAGE APP CON 119.1 363.2	CTAF 122.8 0
--------------------------	---	------------------------



4 NM Holding Pattern

VGSI and RNAV glidepath not coincident (VGSI Angle 3.00/TCH 25).

1000 3000 BGQ

6000 2500

218° 038°

038°

1900

5 NM 3 NM 0.5 NM 1.3 NM

*960

*1.3 NM to RW04

RW04

GP 3.00° TCH 45

*LNAV only.

CATEGORY	A	B	C	D
LPV DA	602-¾	250 (300-¾)		NA
LNAV/VNAV DA	828-1⅝	476 (500-1⅝)		NA
LNAV MDA	780-1	428 (500-1)		NA
CIRCLING	1000-1	646 (700-1)		NA

MIRL Rwy 4-22 0

REIL Rwy 4 and 22 0