

WAAS CH <b>69536</b> <b>W22A</b>	APP CRS <b>218°</b>	Rwy ldg TDZE Apt Elev	<b>3700</b> <b>354</b> <b>354</b>
--	------------------------	-----------------------------	---

RNAV (GPS) RWY 22

WASILLA (IYS) (PAWS)

RNP APCH.

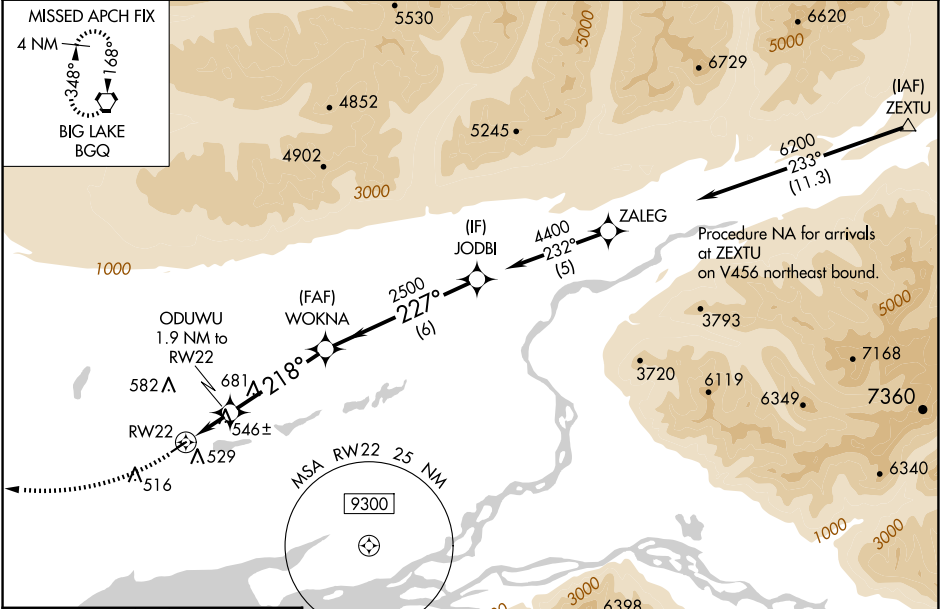
▼

⚠

Circling NA to Rwy 4S and 22S. Baro-VNAV and VDP NA when using Palmer altimeter setting. Rwy 22 helicopter visibility reduction below ¾ SM NA. For uncompensated Baro-VNAV systems, LNAV/VNAV NA below -25°C or above 54°C. When local altimeter setting not received, use Palmer altimeter setting and increase all DA 46 feet, MDA 60 feet and all visibilities ½ mile.

MISSED APPROACH:  
Climb to 1000 then  
climbing right turn to  
3000 direct BQG  
VORTAC and hold.

AWOS-3P <b>135.25</b>	ANCHORAGE APP CON <b>119.1 363.2</b>	CTAF <b>122.8 0</b>
--------------------------	---	------------------------



ELEV 354	TDZE 354
----------	----------

1000 3000 BQG

↑

↶

⬢

\*LNAV only

ODUWU 1.9 NM to RW22

\*1.2 NM to RW22

WOKNA 2500

JODBI 4400

RW22 1060\*

GP 3.31° TCH 40

218°

227°

2500

4400

1.2 NM 0.7 NM 4.1 NM 6 NM

0.4% UP

1690 X 60

3700 X 75

0.5% UP

MIRL Rwy 4-22

REIL Rwy 4 and 22

CATEGORY	A	B	C	D
LPV DA	604-¾	250 (300-¾)	NA	
LNAV/VNAV DA	821-1½	467 (500-1½)	NA	
LNAV MDA	800-1	446 (500-1)	NA	
<div>⬢</div> CIRCLING	1000-1	646 (700-1)	NA	