

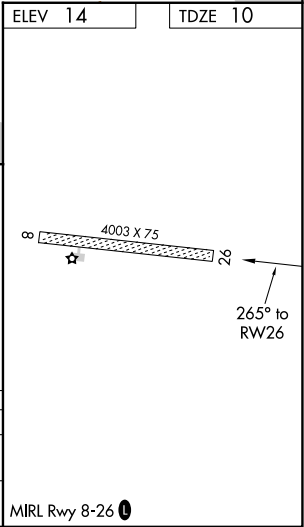
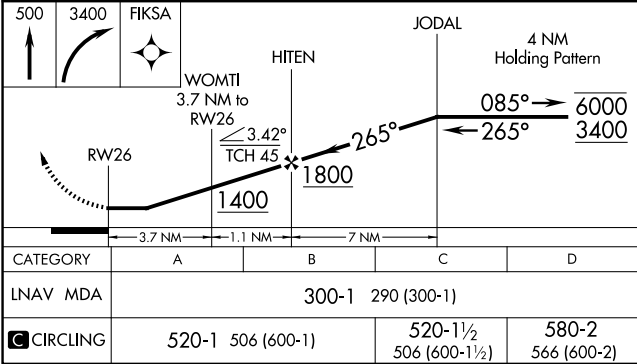
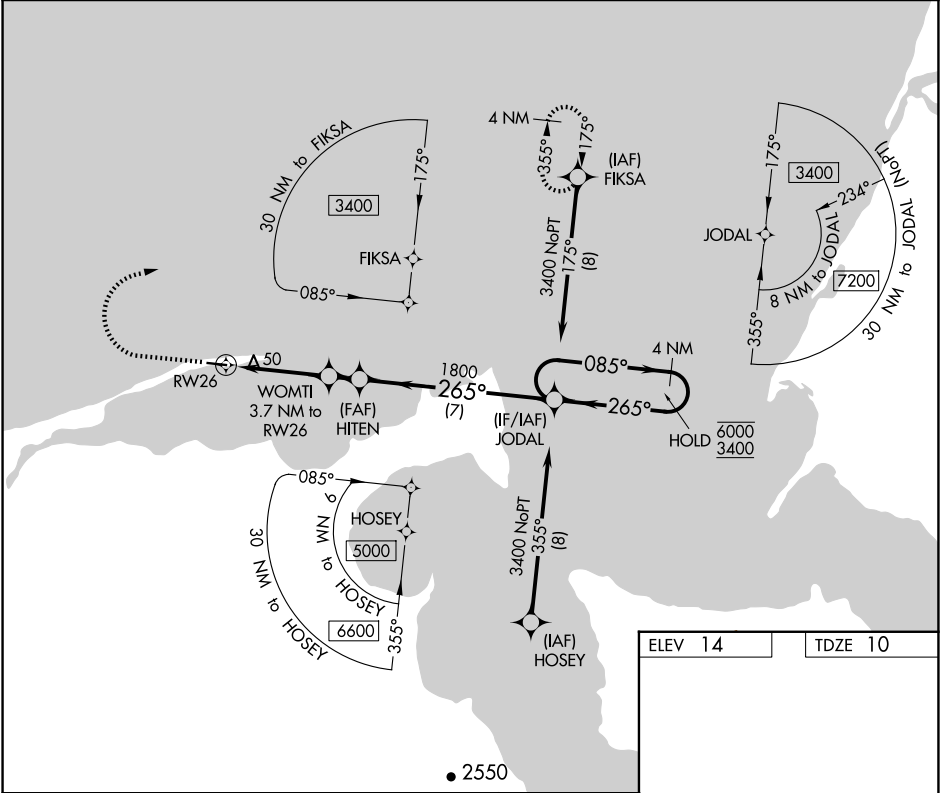
APP CRS	Rwy Idg	4003
265°	TDZE	10
	Apt Elev	14

RNAV (GPS) RWY 26

NELSON LAGOON (OUL) (PAOU)

RNP APCH. ▼ Procedure NA at night. Rwy 26 helicopter visibility reduction below 1 SM NA.	MISSED APPROACH: Climb to 500, then climbing right turn to 3400 direct FIKSA and hold. Continue climb in hold to 3400.
--	--

AWOS-3P 119,025	ANCHORAGE CENTER 118.5 278.3	CTAF 122.9 0
--------------------	---------------------------------	-----------------



AK, 07 AUG 2025 to 02 OCT 2025

AK, 07 AUG 2025 to 02 OCT 2025