

APP CRS  
289°

Rwy Ldg  
TDZE  
Apt Elev  
149

N/A  
N/A  
149

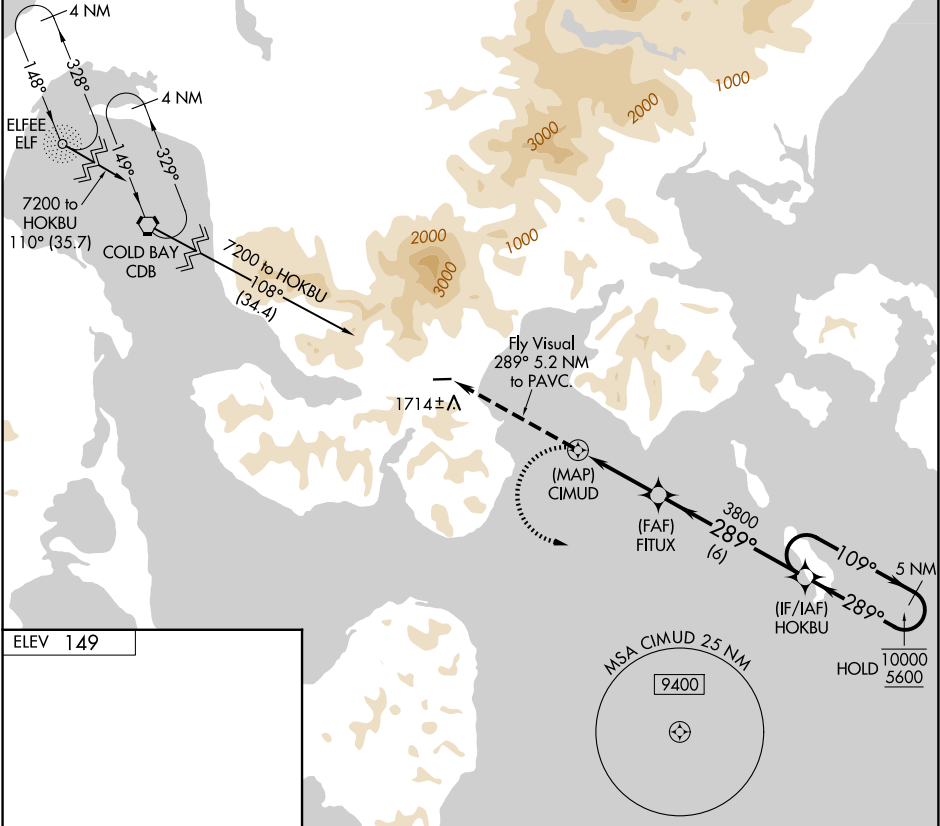
RNAV (GPS)-A  
KING COVE (KVC)(PAVC)

RNP APCH - GPS.

Procedure NA at night.  
Circling NA north Rwys 8 and 26.

MISSED APPROACH: Climbing left turn to 5600 direct HOKBU and hold, continue climb-in-hold to 5600.

AWOS-3P 118.325	ANCHORAGE CENTER 118.5 278.3	CTAF 122.9
--------------------	---------------------------------	---------------



ELEV 149

3500 X 115

26

289°

5600 HOKBU

Fly Visual 289° 5.2 NM to PAVC.

CIMUD

FITUX

3800

5.2 NM

3.3 NM

6 NM

HOKBU

5 NM Holding Pattern

109°

289°

10000

5600

CATEGORY	A	B	C	D
CIRCLING	2080-6 1931 (2000-6)	2520-6 2371 (2400-6)	NA	

AK, 07 AUG 2025 to 02 OCT 2025

AK, 07 AUG 2025 to 02 OCT 2025