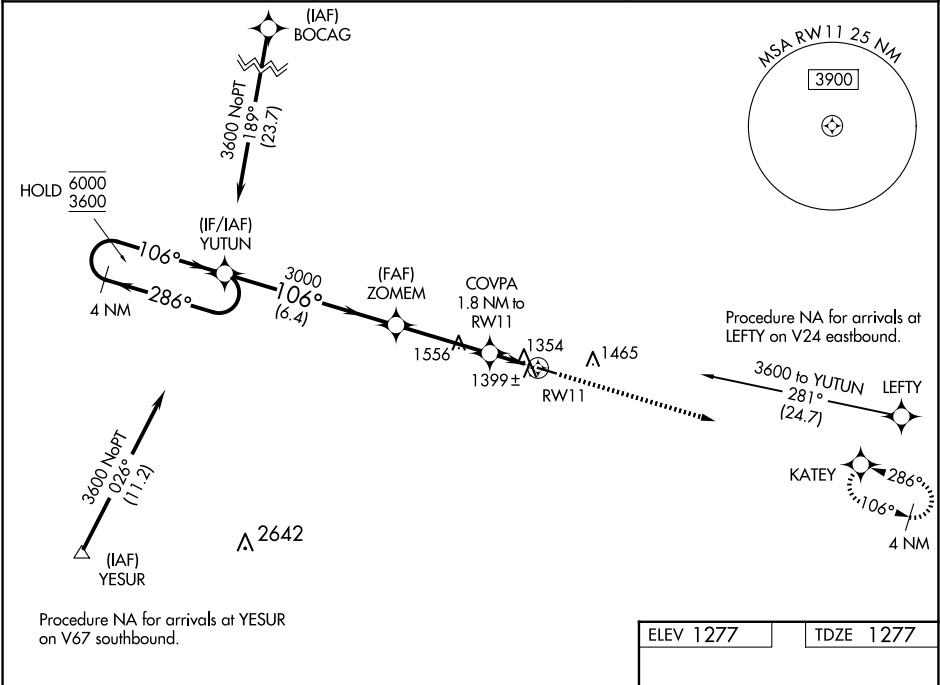


WAAS CH 65829 W11A	APP CRS 106°	Rwy Idg TDZE 1277 Apt Elev 1277	4001
--	------------------------	---	-------------

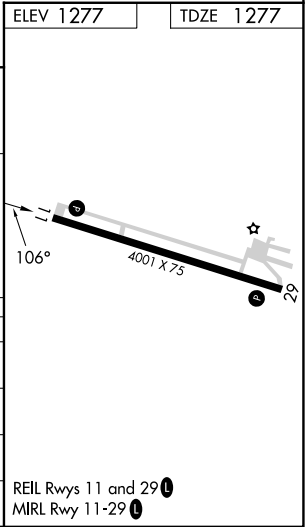
RNAV (GPS) RWY 11
FILLMORE COUNTY (FKA)

RNP APCH.		MISSED APPROACH: Climb to 3200 direct KATEY and hold.
<div><div></div> Rwy 11 helicopter visibility reduction below ¾ SM NA.</div> <div><div></div> For uncompensated Baro-VNAV systems, LNAV/VNAV NA below -17°C or above 54°C.</div>		

AWOS-3PT 118.55	ROCHESTER APP CON ★ 119.8 251.125	CTAF 122.9 0
---------------------------	---	------------------------



4 NM Holding Pattern		VGSI and RNAV glidepath not coincident (VGSI Angle 3.00/TCH 26).		3200	KATEY
6000 ← 286°		YUTUN		↑	✧
3600 → 106°		ZOMEM		*ILNAV only	
GP 3.00°		3000		COVPA 1.8 NM to RW11	
TCH 40		*1880		*1.1 NM to RW11	
		6.4 NM		RW11	
		3.5 NM		0.7	
				1.1 NM	
CATEGORY	A	B	C	D	
LPV DA	1527-1	250 (300-1)		NA	
ILNAV/VNAV DA	1573-1	296 (300-1)		NA	
ILNAV MDA	1660-1	383 (400-1)	1660-1 3/8 383 (400-1 1/8)	NA	
CIRCLING	1700-1 423 (500-1)	1900-1 623 (700-1)	1900-1 3/4 623 (700-1 3/4)	NA	



NC-1, 07 AUG 2025 to 04 SEP 2025

NC-1, 07 AUG 2025 to 04 SEP 2025