

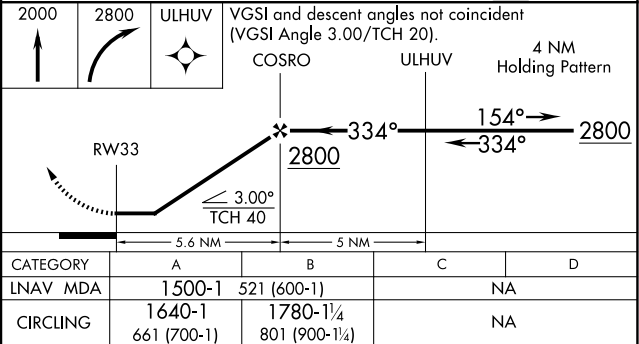
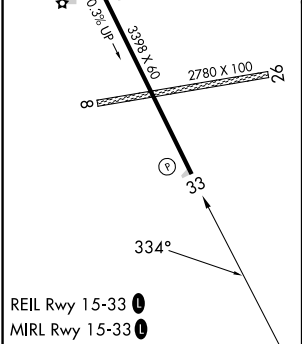
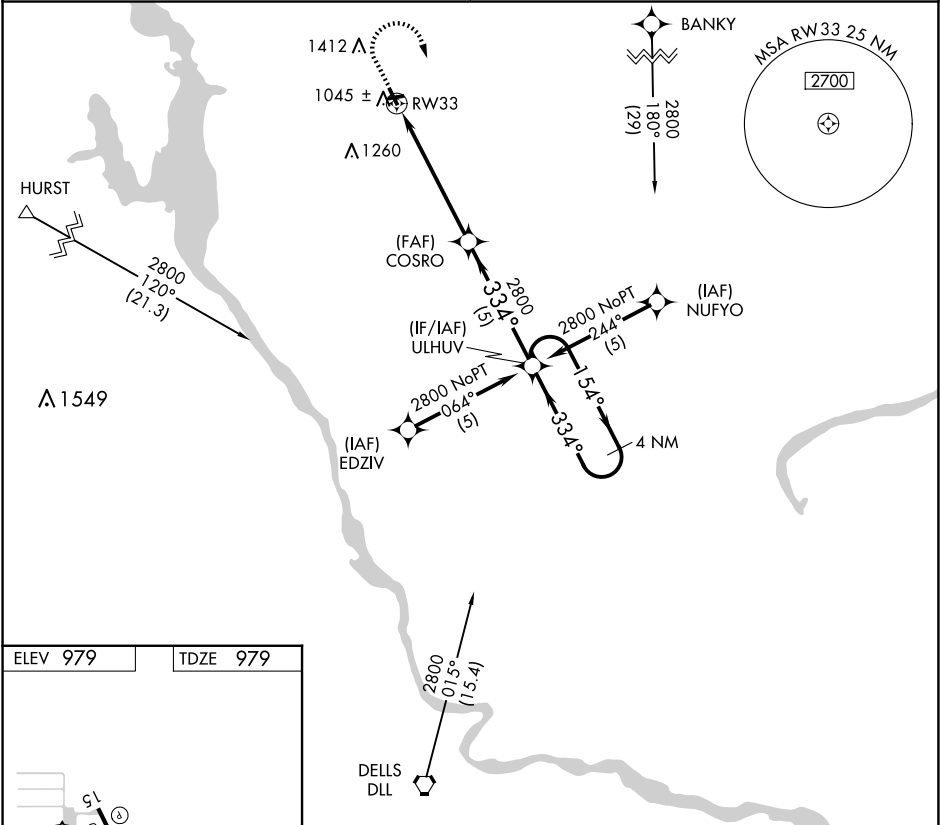
| | | |
|---------|----------|------|
| APP CRS | Rwy Idg | 3398 |
| 334° | TDZE | 979 |
| | Apt Elev | 979 |

RNAV (GPS) RWY 33

ADAMS COUNTY LEGION FLD (63C)

| | | |
|-----------|---|--|
| RNP APCH. | Procedure NA at night. Rwy 33 helicopter visibility reduction below 1 SM NA. Circling NA to Rwys 8 and 26. Use Baraboo Wisconsin Dells altimeter setting. | MISSED APPROACH: Climb to 2000 then climbing right turn to 2800 direct ULHUV and hold. |
|-----------|---|--|

| | |
|---------------------------------|---------------|
| VOLK APP CON★ 135.25 244.875 | CTAF 122.9 |
|---------------------------------|---------------|



EC-3, 07 AUG 2025 to 04 SEP 2025

EC-3, 07 AUG 2025 to 04 SEP 2025