

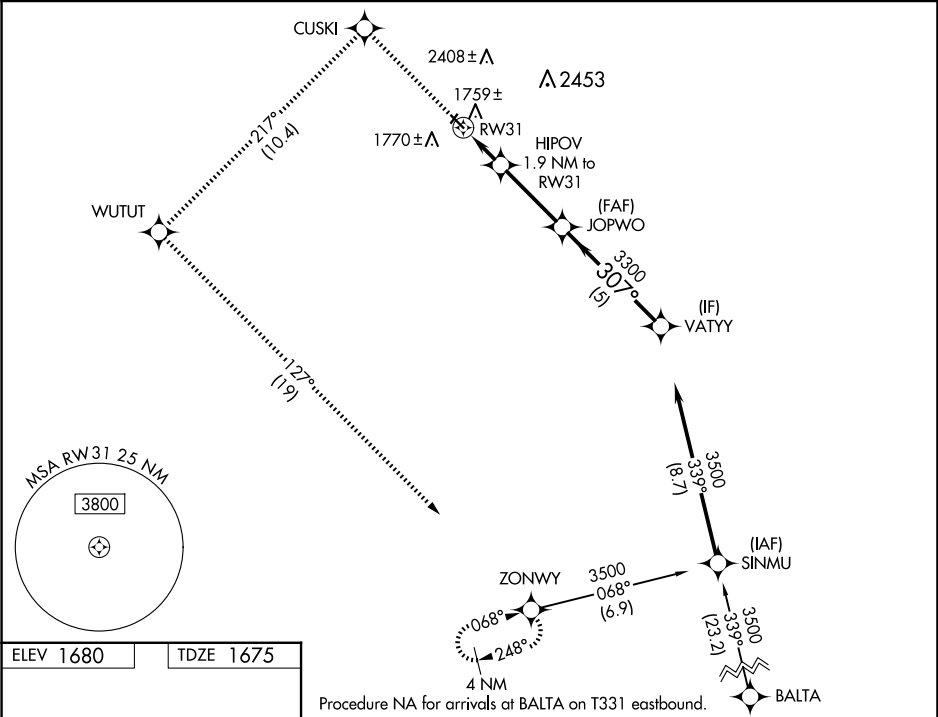
WAAS CH 78217 W31A	APP CRS 307°	Rwy Idg TDZE 1675 Apt Elev 1680
--	------------------------	---

RNAV (GPS) RWY 31

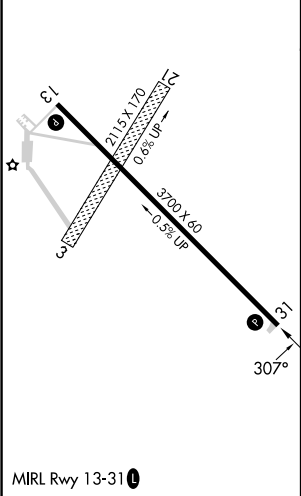
BOTTINEAU MUNI (D09)

RNP APCH - GPS.	MISSED APPROACH: Climb to 3900 direct CUSKI and left turn on track 217° to WUTUT and left turn on track 127° to ZONWY and hold.
<div><div></div><div>Circling NA to Rwys 3 and 21. For uncompensated Baro-VNAV systems, LNAV/VNAV NA below -18°C or above 54°C.</div></div>	

AWOS-3PT 118.25	MINOT APP CON★ 119.6 363.8	UNICOM 122.8 (CTAF) 0
---------------------------	--------------------------------------	---------------------------------



ELEV 1680	TDZE 1675
-----------	-----------



3900	CUSKI	WUTUT	ZONWY	VATYY
↑	tr 217°	tr 127°		
VGSI and RNAV glidepath not coincident (VGSI Angle 3.00/TCH 30).				
	RW31	HIPOV 1.9 NM to RW31	JOPWO 3300	VATYY 3500
	1 NM to RW31	2300	307°	3300
	1 NM	0.9 NM	3.1 NM	5 NM
CATEGORY	A	B	C	D
LPV DA	1875-1	200 (200-1)	NA	NA
LNAV/VNAV DA	1925-1	250 (300-1)	NA	NA
LNAV MDA	2020-1	345 (400-1)	NA	NA
CIRCLING	2200-1 520 (600-1)	2380-1 700 (700-1)	NA	NA