

APP CRS
227°

Rwy Ldg
TDZE
726
Apt Elev
730

4301
726
730

RNAV (GPS) RWY 23

BRADFORD COUNTY (N27)

▼

▲ NA

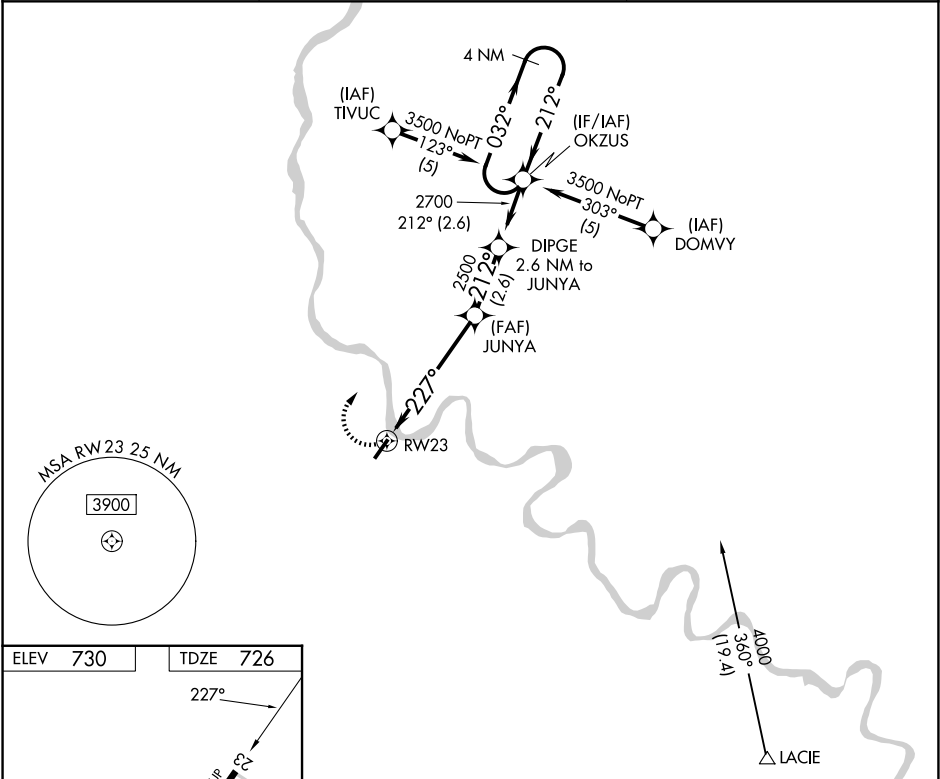
When local altimeter setting not received, use Elmira altimeter setting and increase all MDAs 40 feet. GPS or RNP-0.3 required. DME/DME RNP-0.3 NA.
Night landing: RWY 5 NA. Helicopter visibility reduction below ¾ SM NA.

MISSED APPROACH:
Climbing right turn to 3500
direct OKZUS WP and hold.

AWOS-3
119.925

BINGHAMTON APP CON ★
118.6 257.625

UNICOM
123.0 (CTAF) 0



ELEV 730 TDZE 726

3500 OKZUS

RW23

5.5 NM

2.6 NM

2.6 NM

CATEGORY	A	B	C	D
LNAV MDA	1800-1¼ 1074 (1100-1¼)	1800-1½ 1074 (1100-1½)	NA	
CIRCLING	2020-1¼ 1290 (1300-1¼)	2020-1½ 1290 (1300-1½)	NA	

REIL Rws 5 and 23 0
MIRL Rwy 5-23 0

NE-4, 07 AUG 2025 to 04 SEP 2025

NE-4, 07 AUG 2025 to 04 SEP 2025