

APP CRS	Rwy Idg	N/A
104°	TDZE	N/A
	Apt Elev	412

RNAV (GPS)-B

HARFORD COUNTY (0W3)

RNP APCH - GPS.

T Rwy 1, 19, 10 and 28 helicopter visibility reduction below 1 SM NA.
A When local altimeter setting not received, use Aberdeen Proving Grounds (Aberdeen) altimeter setting and increase all MDAs 80 feet.
 Procedure NA at night.

MISSED APPROACH: Climb to 3000
direct IJNE and on track 068° to
CURVY and hold, continue climb-in-hold
to 3000.

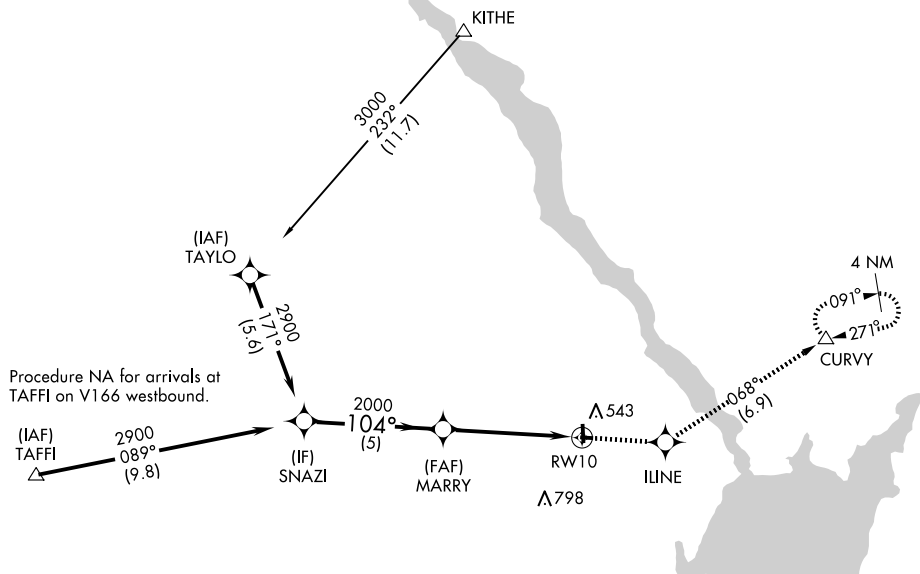
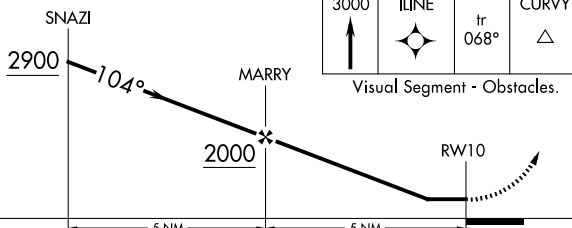
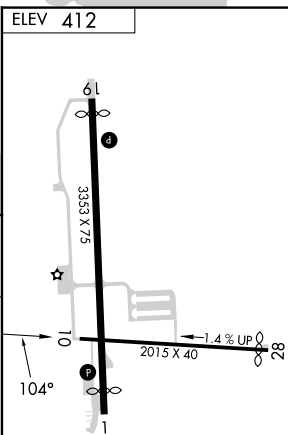
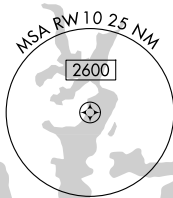
AWOS-3PT
132.725

KAPG ATIS ★
124.425

POTOMAC APP CON
125.525 291.625

UNICOM
122.8 (CTAF) **L**

Procedure NA for arrivals at KITHE on V499 northbound and V3-408 eastbound.

¹²⁸⁹
A.

CATEGORY	A	B	C	D
<input checked="" type="checkbox"/> CIRCLING	960-1 548 (600-1)	NA		

MIRL Rwy 1-19 **L**
REIL Rwy 1 and 19 **L**
REIL Rwy 10 and 28

RNAV (GPS)-B