

WAAS CH 97346 W34A	APP CRS 339°	Rwy Ldg TDZE 1273 Apt Elev 1288
--	------------------------	---

RNAV (GPS) RWY 34R

NORTHWEST ARKANSAS NTL (XNA)

RNP APCH - GPS.

▼

▲

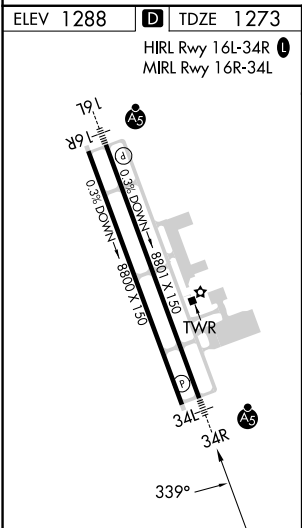
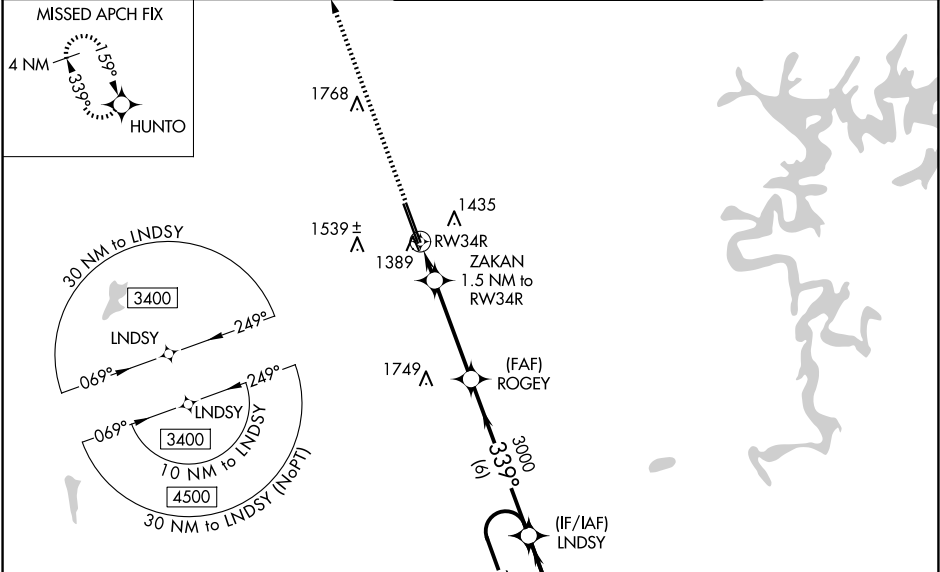
For uncompensated Baro-VNAV systems, LNAV/VNAV NA below -13°C or above 54°C. For inop ALS, increase LPV Cat E visibility to RVR 4000, LNAV/VNAV all Cats visibility to RVR 4500 and LNAV Cat E visibility to RVR 6000.
* RVR 1800 authorized with use of FD or AP or HUD to DA.

MALSR

AS

MISSED APPROACH: Climb to 3400 direct HUNTO and hold

ATIS 119.425	RAZORBACK APP CON ★ 121.0 244.575	NORTHWEST ARKANSAS NTL TOWER ★ 127.1 (CTAF) 0	GND CON 121.9
------------------------	---	---	-------------------------



3400 HUNTO

VGSI and RNAV glidepath not coincident (VGSI Angle 3.00/TCH 51).

4 NM Holding Pattern

LND SY

159°

339°

6000 3400

GP 3.00° TCH 58

ZAKAN 1.5 NM to RW34R

ROGEY 3000

RW34R 1800

1.5 NM

3.8 NM

6 NM

CATEGORY	A	B	C	D	E
LPV DA *	1473/24 200 (200-½)				
LNAV/VNAV DA	1568/24 295 (300-½)				
LNAV MDA	1660/24	387 (400-½)	1660/35	387 (400-¾)	
CIRCLING	1740-1 452 (500-1)	1760-1 472 (500-1)	2040-2¼ 752 (800-2¼)	2080-2½ 792 (800-2½)	2080-2¾ 792 (800-2¾)

SC-1, 07 AUG 2025 to 04 SEP 2025

SC-1, 07 AUG 2025 to 04 SEP 2025